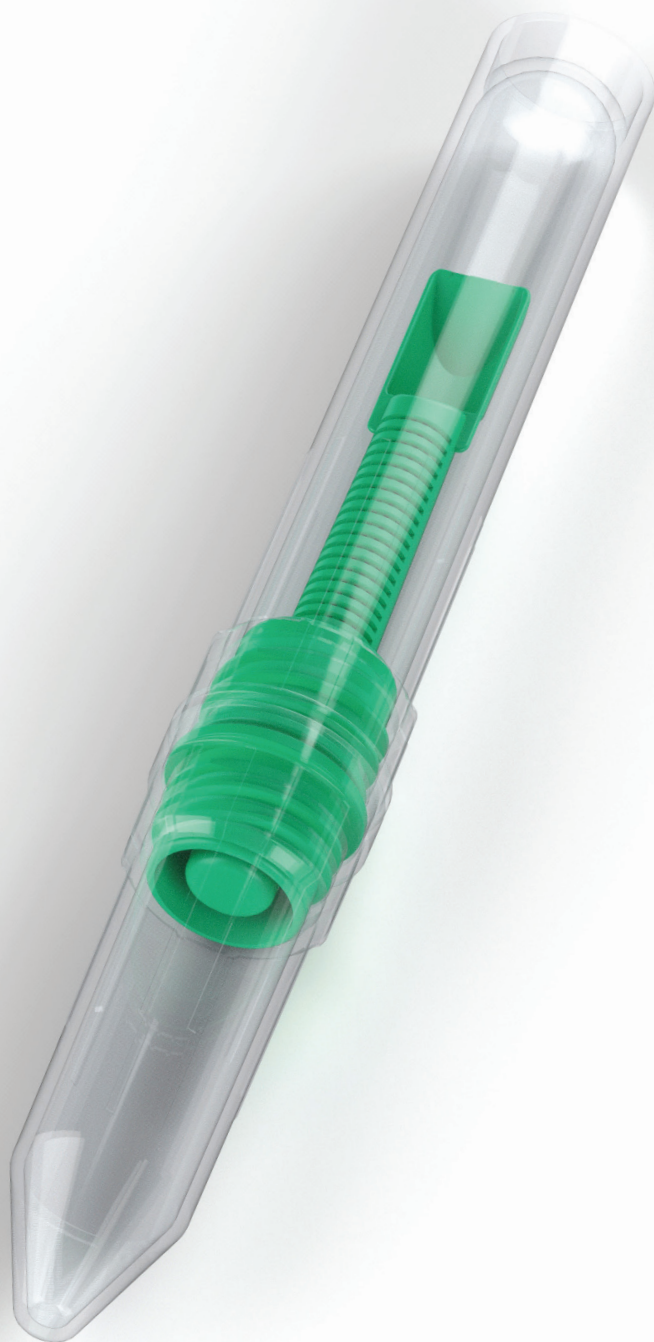


FOR FAECAL CONCENTRATION OF

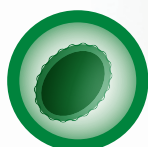
HELMINTH OVA AND LARVAE / PROTOZOA CYSTS
AND OOCYSTS



APACOR

Mini Parasep[®] SF

SOLVENT FREE FAECAL PARASITE CONCENTRATOR



PARASITOLOGY

SINGLE USE IN VITRO DIAGNOSTIC DEVICE

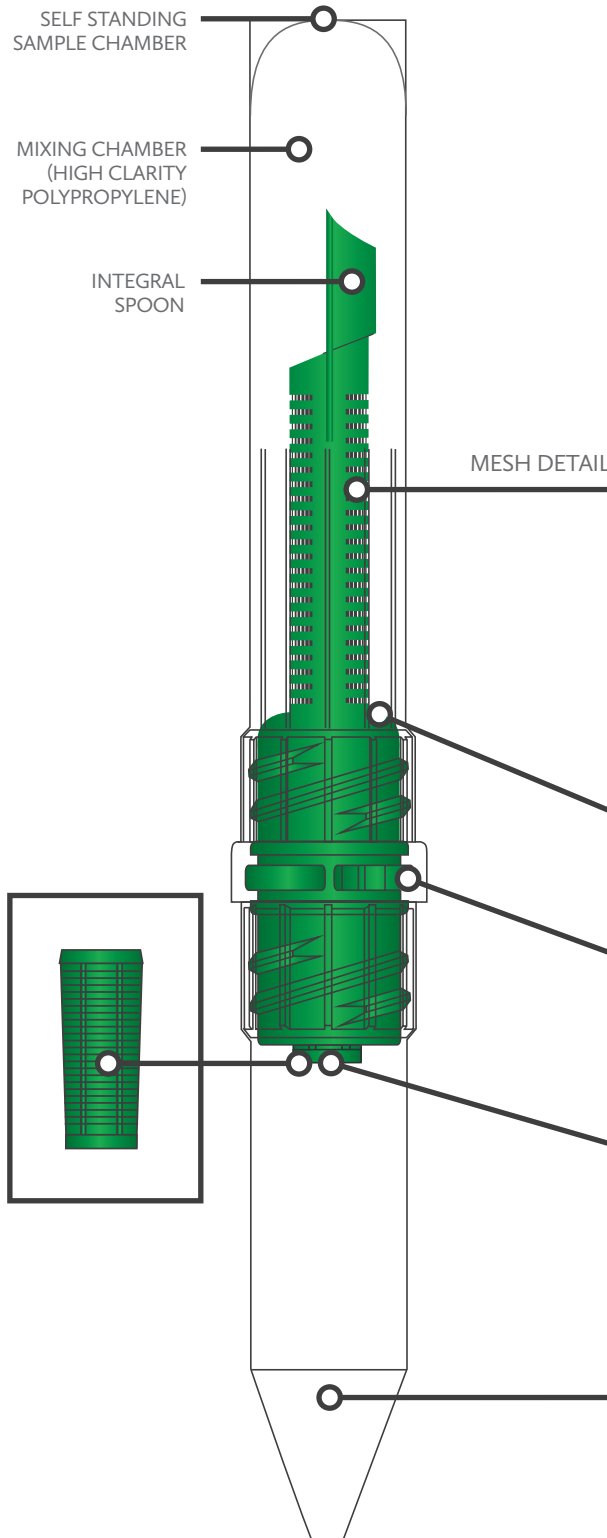


Health and Safety Benefits

- Totally enclosed/sealed process
- Solvent free protocol
- Disposable device
- Single use, no sample contamination
- Ready to use systems available

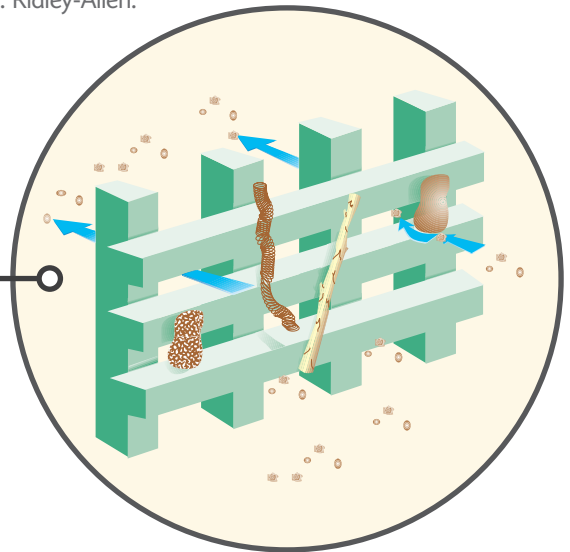
Performance Benefits

- Optimum sample recovery
- Enhanced sample clarity
- Rapid four step process
- Human resources optimised
- Easy patient identification



Patented Filter (High Density Polyethylene)

A two stage filtration matrix. Large particles are rejected without occluding the 425µm pores. Recovery rate with Parasep® is comparable to traditional sieve method, ie: Ridley-Allen.



Debris Trap

Rejected particles are trapped to prevent extrusion into the Sedimentation Cone during centrifugation.

Air/Liquid Seal and Safety Lock

The 'seal' prevents the release of biohazardous material. The 'lock' ensures the Mixing Chamber and Filter are removed together for safe disposal.

Fat Dispersion Chamber

A perforated fat dispersion chamber (EC Des.App.000512017) removes the smaller faecal debris and separates the fat content so that it can be efficiently removed from the resulting sediment without the use of ether or ethyl acetate.

Sedimentation Cone

Parasites are efficiently collected in the sedimentation cone during centrifugation and easily aspirated/ pipetted for microscopic examination.

Centrifuge Compatibility

Designed to fit all 15ml centrifuge buckets.

Procedure

See label for storage conditions and expiry date. Please adhere to the following guidelines when handling Mini Parasep® SF. To avoid cross contamination the Mini Parasep® SF device should remain closed at all times except when introducing the sample or when retrieving the final concentrated sample for examination.

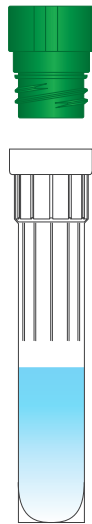
STEP 1 - SAMPLE PREPARATION

Fresh Samples

If required unscrew lid and add 3.3ml of 10% Formalin and one drop of Triton X to the mixing tube. Introduce a level scoop of faecal sample. Use the spoon at the end of the Mini Parasep® SF filter.

Preserved Samples

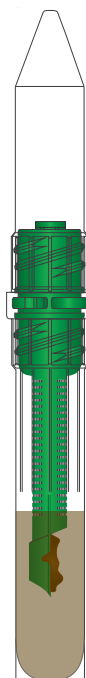
Shake or vortex the incoming preserved sample to thoroughly mix. Transfer 0.3ml = 0.3g of sample into the Mini Parasep® SF mixing chamber. Add 3.0ml of 10% Formalin/water plus 2 drops of Triton X.



STEP 2 - EMULSIFICATION

Seal the Mini Parasep® SF by screwing in the filter/ sedimentation cone unit.

Vortex or shake to emulsify with the sedimentation cone pointing upwards.



IRRITANT



BIOHAZARD

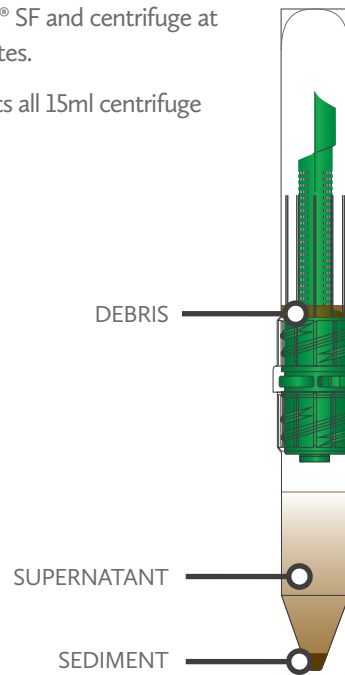
SINGLE USE DEVICE

DISCARD IN ACCORDANCE WITH YOUR STANDARD AND LOCAL OPERATING PROCEDURE FOR CLINICAL WASTE

STEP 3 - CENTRIFUGATION

Invert Mini Parasep® SF and centrifuge at 200g for two minutes.

Mini Parasep® SF fits all 15ml centrifuge buckets.



NOTE: TO CALCULATE THE REQUIRED RPM FOR ANY CENTRIFUGE.

$$\text{RPM} = \sqrt{\frac{g}{1.12r}} \times 1000$$

RPM - rotor speed in revs/min.
g - centrifugal force (max. 1000g)
r - radius, horizontal distance between sedimentation cone tip and spindle centre measured in mm.

STEP 4 - EXAMINATION

Direct Method

Unscrew and discard the filter and mixing tube. Pour off all the liquid above the sediment.

Pipette one drop of Saline or Iodine solution onto a slide, add one drop of deposit to the Saline or Iodine, mix sample and cover with cover-slip. (The whole of the deposit must be examined)

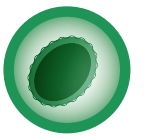
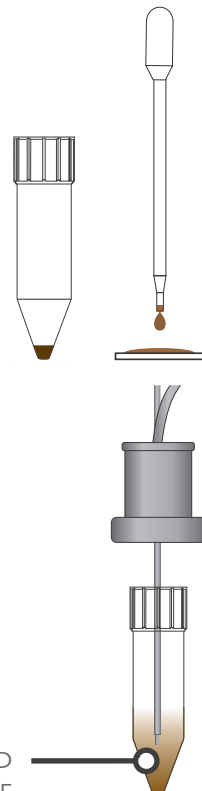
OR

ParaSys™

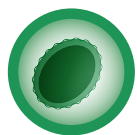
Unscrew and discard the filter and mixing tube. Pour off all the liquid above the sediment.

Press 'Dilute' to add Saline to the sediment. Shake or vortex to re-suspend sample. Insert Aspirator into suspension and press SAMPLE to draw 100µl into the Paraslide™. (Refer to ParaSys™ instruction manual).

RE-SUSPENDED SAMPLE



Mini Parasep® SF
SOLVENT FREE FAECAL PARASITE CONCENTRATOR



SOLVENT FREE FAECAL PARASITE CONCENTRATOR

Mini Parasep® SF

Ordering Information

MINI PARASEP® SF	STORAGE TEMP	PACK SIZE	CODE
Mini Parasep® SF (Devices supplied without reagents)	4-35 °C	50	148800
Mini Parasep® SF (Pre-filled with 3.3ml 10% Formalin Fixative and 1 drop of Triton X)	15-35 °C	40	148900
Mini Parasep® SF (Pre-filled with 3.3ml SAF and 1 drop of Triton X)	15-35 °C	40	148920
Mini Parasep® SF (Pre-filled with 3.3ml Parasafe®)	15-35 °C	40	148930

FIXATIVES	CODE
Formalin 10%	1460
Sodium Acetate-Acetic Acid Formalin Solution (SAF) Fixative	1461
10% Formalin Fixative in water	1463
Merthiolate-Iodine-Formalin (MIF)	1465

REAGENTS	CODE
Triton X-100 Solution	1472
Ethyl Acetate	1473
Acetone	1475
Neutral Red	1494

STAINS	CODE
Gram's Decolouriser	1476
Acridine Orange (Acetate Buffered)	1480
Field Stain-Solution A	1482
Field Stain-Solution B	1483
Giemsa Stain-Rapid	1484
Lugol's Iodine-Aqueous	1486
Iron Haematoxylin Solution A	1487
Iron Haematoxylin Solution B	1488
Trichrome For Microsporidia	1489
Trichrome For Protozoa	1490
Crystal Violet	1492
Safranin O	1493
Carbol Fuchsin (Gram)	1495
Malachite Green	1501
Modified Z/N Stain Pack Cold Kinyoun	1503
Gram's Stain Pack	1504

Products can be ordered direct from Apacor or from an appointed distributor

Visit our website for all the latest information www.apacor.com or e-mail on: sales@apacor.com



UNIT 5, SAPPHIRE CENTRE,
FISHPONDS ROAD, WOKINGHAM,
BERKSHIRE, RG41 2QL, ENGLAND
TEL: +44 (0)118 979 5566
FAX: +44 (0)118 979 5186

