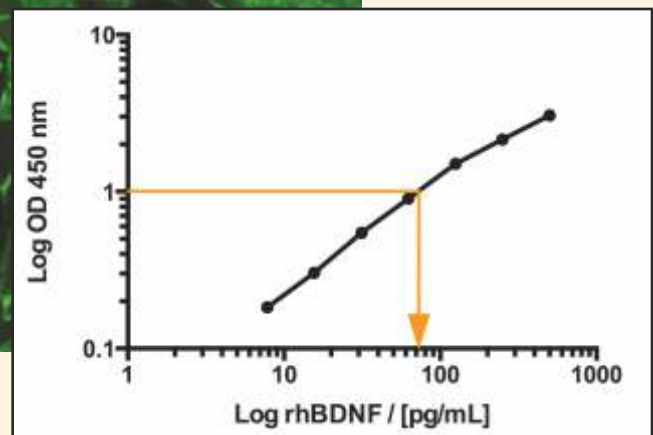
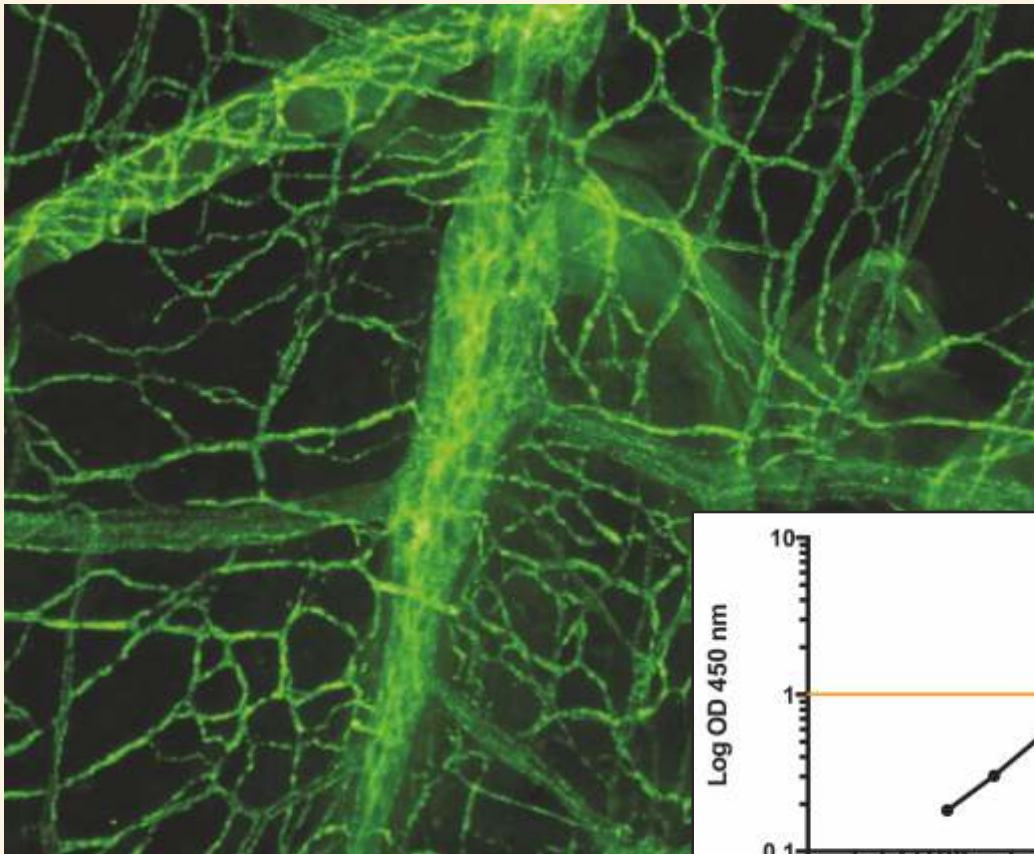
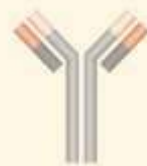


NEUROTROPHINS & THEIR RECEPTORS

ANTIBODIES, PROTEINS & ELISA KITS



Biogenuix[®]



biosensis
fine bioscience tools

Your Neuroscience Solution

Neurotrophic Factor Receptors

Neurotrophins (also known as neurotrophic factors) are a group of growth factor proteins that induce the survival, development and function of neurons. Neurotrophins are secreted by target tissue and act by preventing the associated neuron from initiating programmed cell death – thus allowing the neurons to survive. Biosensis has provided a large selection of antibodies that will assist the study of neurotrophins and has been the worldwide leader in Neurotrophin antibodies and OEM supplier for over 20 years.

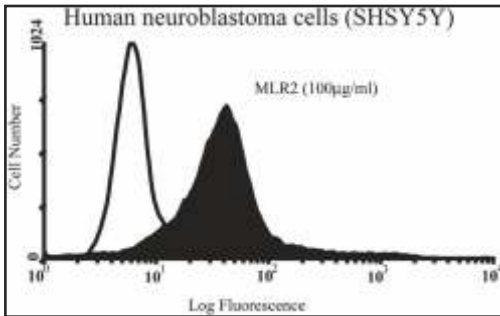


Figure 1. Flow cytometry analysis of endogenously expressed p75NTR on SHSY5Y cells. X-63 conjugated control IgG represents negative control for all experiments.

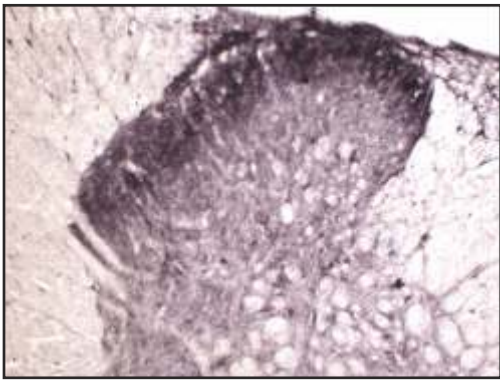


Figure 2. Immunohistochemical staining of Tyrosine Kinase Receptor A (TrkA) in rat spinal cord (free floating cryostat section) using rabbit antibody Cat# R-152-100 at a dilution of 1 in 2000. Courtesy of Professor Xin Fu Zhou, The Flinders University of South Australia.

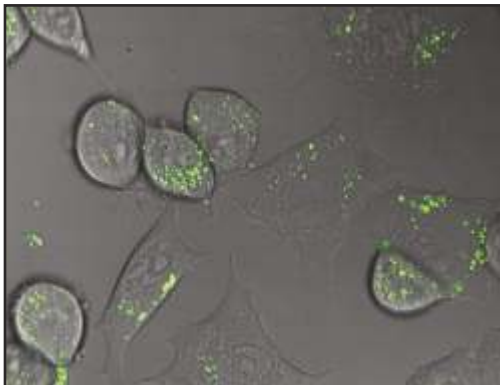


Figure 3. Live confocal imaging of intracellular trafficking of p75NTR using FITC labelled mouse monoclonal antibody to human p75NTR [MLR2], Cat# M-018-50-FT in NSC34 mouse motor neuron cell line.

Neurotrophic Factor Receptor Antibodies

Target	Purity	Code	Host	Reactivity	Applications
GFR α-1 NEW	ap	C-1659-100	Ch	Hu	WB, IF
GFR α-2	ws	R-067-100	Rb	Rat	WB, IHC
GFR α-2 NEW	ap	C-1660-100	Ch	Hu	WB, IF
GFR α-3	ws	R-068-100	Rb	Rat	WB, IHC
GFR α-3 NEW	Purified	C-1661-100	Ch	Hu	WB, IF
GFR α-4 NEW	ap	C-1662-100	Ch	Hu	WB, IHC
p75NTR [MLR2] ATTO	IgG	M-028-50-AT	Ms	Hu, Rat, Ms	WB, IHC, IF, FACS
p75NTR [MLR2]	IgG	M-009-100	Ms	Hu, Rat, Ms, Gp	WB, IHC, IF, FACS, Ipan
p75NTR [MLR2] FITC	IgG	M-018-50-FT	Ms	Hu, Rat, Ms	WB, IHC, IF, FACS
p75NTR [MC192] ATTO	IgG	M-026-50-AT	Ms	Rat	IHC, FACS
p75NTR [MC192]	IgG	M-006-100	Ms	Rat	WB, IHC, ELISA
p75NTR [MC192] FITC	IgG	M-016-50-FT	Ms	Rat	IHC, IF, FACS
p75NTR [ME20.4] ATTO	IgG	M-027-50-AT	Ms	Hu, Cat, Dog, Pig, Rb, Sh	IHC, IF, FACS
p75NTR [ME20.4]	IgG	M-011-100	Ms	Hu, Cat, Dog, Pig, Rb, Sh	IHC, IF, FACS, ELISA
p75NTR [ME20.4] FITC	IgG	M-017-50-FT	Ms	Hu, Cat, Dog, Pig, Rb, Sh	IHC, IF, FACS
p75NTR	ws	R-089-100	Rb	Rat	IHC, IF
RET NEW	ws	C-1663-100	Ch	Hu	WB, IF
Sortilin	ws	R-150-100	Rb	Hu, Rat, Ms	IHC, ELISA
TrkA (342-361aa)	ap	R-1362-100	Rb	Hu, Rat, Ms	WB
TrkA (rECD)	ws	R-152-100	Rb	Hu, Rat, Ms	IHC, ELISA
TrkA, phospho Y496		<i>Coming soon</i>	Ms	Hu	
TrkA		<i>Coming soon</i>	Ms	Hu	
TrkB [4D3-F10]	IgG	M-853-100	Ms	Hu	WB, ELISA
TrkB (23-36aa)	ws	R-121-100	Rb	Hu, Rat	IHC
TrkB	ws	R-149-100	Rb	Rat, Ms	IHC, ELISA
TrkB		<i>Coming soon</i>	Ms	Hu	
TrkB, phospho S478		<i>Coming soon</i>	Rb	Hu	
TrkB, phospho Y816		<i>Coming soon</i>	Rb	Hu	
TrkC	ws	R-151-100	Rb	Hu, Rat, Ms	IHC
TrkC		<i>Coming soon</i>	Ms	Hu	

Key: Whole serum (ws); Affinity Purified (ap); Mouse (Ms); Guinea pig (Gp); Human (Hu); Rabbit (Rb); Sheep (Sh); Chicken (Ch); Bovine (Bov); Goat (Gt); Immunohistochemistry (IHC); Immunofluorescence (IF); Immunopanning (IPan); Western Blot (WB); Immunohistochemistry/paraffin embedded IH(P); Immunoprecipitation (IP); Immunocytochemistry (IC)

Neurotrophic Factors

Extensive research spanning half a century has established a preeminent role for the neurotrophins in promoting and regulating neuron survival, axon growth, terminal arborization in neuronal development, modulation of synaptic plasticity, as well as neuroprotection in the adult nervous system. Their role in human diseases such as cancer and several psychiatric and neurodegenerative disorders has established them as potential targets for future therapeutic applications.

Neurotrophic Factor Antibodies						Neurotrophic Factor Antibodies					
Target	Purity	Code	Host	Reactivity	Applications	Target	Purity	Code	Host	Reactivity	Applications
BDNF	Purified	C-1517-500	Ch	Hu, Ms	ELISA	HBGF-1	ap	R-1352-100	Rb	Hu, Rat, Ms	WB
BDNF (rHuBDNF)	IgG	R-017-500	Rb	Hu, Rat, Ms	WB, IHC, ELISA	HGF	ap	R-1353-100	Rb	Hu, Rat, Ms	WB
BDNF (rHuBDNF)	ws	R-088-100	Rb	Hu, Rat, Ms	WB, IHC, ELISA	MANF NEW	Purified	M-1673-100	Ms	Hu	WB
BDNF (rHuBDNF)	IgG	S-015-500	Sh	Hu, Rat	WB, IHC, ELISA	MANF NEW	ap	R-1675-100	Rb	Hu	WB
BDNF (rHuBDNF)	ws	S-016-100	Sh	Hu, Rat, Ms	WB, IHC, ELISA	Neurturin (rHuNTN) NEW	IgG	M-1670-100	Ms	Hu	WB
BDNF NEW (rHuBDNF)	ap	R-1707-100	Rb	Rat, Ms	WB	Neurturin (rHuNTN) NEW	IgG	R-1669-100	Rb	Hu	WB
BDNF (162-176aa)	ap	R-1004-100	Rb	Hu, Rat, Ms, Rb	WB	Neurturin (rHuNTN)	ws	R-1561-100	Rb	Hu, Rat, Ms	IHC
BDNF (129-138aa)	IgG	R-066-500	Rb	Hu, Rat	WB, IHC, ELISA	Neurturin (rHuNTN)	ws	S-010-100	Sh	Hu, Rat, Ms	WB, IHC, ELISA
BDNF (129-138aa)	ws	R-083-100	Rb	Hu, Rat, Ms	WB, IHC, ELISA	β NGF (nMsNGF)	Purified	C-1558-500	Ch	Hu, Rat, Ms	WB, IHC, ELISA
BDNF (129-138aa)	ap	R-172-20	Rb	Hu, Rat, Ms	WB, IHC, ELISA	β NGF (nMsNGF)	ws	G-185-100	Gt	Hu, Rat, Ms	WB, IHC, ELISA
BDNF	Purified	Coming Soon	Ms	Hu		β NGF (nMsNGF)	ap	S-051-50	Sh	Hu, Rat, Ms	WB, IHC, ELISA
CDNF [6G5]	IgG	M-1676-100	Ms	Hu NEW	WB	β NGF (nMsNGF)	ap	R-174-20	Rb	Hu, Rat, Ms	WB, IHC, ELISA
CDNF [7D6]	IgG	M-1677-100	Ms	Hu NEW	WB	β NGF (nMsNGF)	IgG	S-052-500	Sh	Hu, Rat, Ms	WB, IHC, ELISA
CDNF	ap	R-1674-100	Rb	Hu NEW	WB	β NGF (nMsNGF)	IgG	R-093-500	Rb	Hu, Rat, Ms	WB, IHC, ELISA
CNTF	Purified	C-1526-500	Ch	Hu, Rat, Ms	WB, IHC, ELISA	β NGF (nMsNGF)	ws	S-050-250	Sh	Hu, Rat, Ms	WB, IHC, ELISA
CNTF	ws	S-025-100	Sh	Hu, Rat, Ms	WB, IHC, ELISA	β NGF (nMsNGF)	ws	R-085-100	Rb	Hu, Rat, Ms	WB, IHC, ELISA
CNTF	ws	R-100-100	Rb	Hu, Rat, Ms	WB	NT3 (19-128aa)	ws	Mo-935-50	Ms	Hu	WB, ELISA
FGF, Basic	ap	S-076-100	Sh	Hu, Rat, Ms	IHC	NT3 (90-104/199-214aa)	Purified	C-1513-500	Ch	Hu, Ms	ELISA
FGF, Basic	ws	S-008-100	Sh	Hu, Rat, Ms	WB, IHC	NT3 (139-149aa)	ap	R-175-20	Rb	Hu, Rat, Ch	WB, IHC, ELISA
FGF-2	ap	R-1019-100	Rb	Hu, Rat	WB, IHC	NT3 (139-149aa)	ap	S-060-50	Sh	Hu, Rat, Ch	WB, IHC, ELISA
FGF-4	ap	R-1623-100	Rb	Hu, Rat, Ms	WB	NT3 (139-149aa)	IgG	R-096-500	Rb	Hu, Rat, Ch	WB, IHC, ELISA
GDNF (101-118/199-211)	Purified	C-1518-500	Ch	Hu, Rat, Ms	WB, IHC, ELISA	NT3 (139-149aa)	IgG	S-054-500	Sh	Hu, Rat, Ch	WB, IHC, ELISA
GDNF (rHuGDNF)	ws	R-080-100	Rb	Hu, Rat, Ms	WB	NT3 (139-149aa)	ws	S-053-100	Sh	Hu, Rat, Ch	WB, IHC, ELISA
GDNF (rHuGDNF)	ap	S-021-50	Sh	Hu, Rat, Ms	WB, IHC						
GDNF (rHuGDNF)	ws	S-022-100	Sh	Hu, Rat, Ms	WB						
GDNF		Coming Soon	Ms	Hu							

Key: Whole serum (ws); Affinity Purified (ap); Mouse (Ms); Guinea pig (Gp); Human (Hu); Rabbit (Rb); Sheep (Sh); Chicken (Ch); Bovine (Bov); Goat (Gt); Immunohistochemistry (IHC); Immunofluorescence (IF); Immunopanning (IPan); Western Blot (WB); Immunohistochemistry/paraffin embedded (IHP); Immunoprecipitation (IP); Immunocytochemistry (IC)

Neurotrophic Factors continued

Neurotrophic Factor Antibodies continued

Target	Purity	Code	Host	Reactivity	Applications
NT3 (139-149aa)	ws	R-097-100	Rb	Hu, Rat, Ch	WB, IHC, ELISA
NT3 (rHuNT3)	IgG	S-057-500	Sh	Hu, Rat, Ch	WB, IHC, ELISA
NT3 (rHuNT3)	IgG	R-099-500	Rb	Hu, Rat, Ch	WB, IHC, ELISA
NT3 (rHuNT3)	ws	R-098-100	Rb	Hu, Rat, Ch	WB, IHC, ELISA
NT3 (rHuNT3)	ws	S-056-100	Sh	Hu, Rat, Ch	WB, IHC, ELISA
NT3 (174-189aa)	ap	R-1016-100	Rb	Hu, Rat, Ms, Rb	WB, IHC
NT4	IgG	R-102-500	Rb	Hu, Rat, Ms, Monkey	WB, IHC, ELISA
NT4	IgG	S-059-500	Sh	Hu, Rat, Ms, Monkey	WB, IHC, ELISA
NT4	ws	R-101-100	Rb	Hu, Rat, Ms, Monkey	WB, IHC, ELISA
NT4	ws	S-058-100	Sh	Hu, Rat, Ms, Monkey	WB, IHC, ELISA
NT4/NT5	Purified	C-1514-500	Ch	Hu, Ms	ELISA
proBDNF	ws	S-079-100	Sh	Hu	WB, ELISA
proBDNF	ap	R-176-20	Rb	Hu, Rat, Ms	WB, IHC
proBDNF	ws	R-087-100	Rb	Hu, Rat, Ms	WB, IHC
proBDNF	<i>Coming Soon</i>		Ms	Hu	
proNGF	ws	S-080-100	Sh	Hu, Rat, Ms	WB, IHC, IF, ELISA
proNGF	<i>Coming Soon</i>		Ms	Hu	
TNFAIP1	ap	R-1347-100	Rb	Hu, Rat, Ms	WB, IHC, IC
VEGF A (60-70aa)	ap	R-1074-100	Rb	Hu, Rat, Ms, Rb	WB, IHC
VEGF-D (101-115aa)	ap	R-1369-100	Rb	Hu	WB

Neurotrophic Factor Proteins

Target	Code	Expression Source
CNTF	PE-003-100	E. coli
HGF	PE-1241-5	Human
NGF, beta	PE-1239-2	Human
NGF, beta	PE-1239-5	Human
NGF (2.5S)	PE-019-25	Mouse
NGF (2.5S)	PE-019-100	Mouse
NGF (2.5S)	PE-019-500	Mouse
NT3	PE-1246-2	Human
NT3	PE-1246-5	Human
SCF	PE-1242-2	Human
SCF	PE-1242-5	Human
SCFR	PE-1243-25	Human
SCFR	PE-1243-50	Human

Key: Whole serum (ws); Affinity Purified (ap); Mouse (Ms); Guinea pig (Gp); Human (Hu); Rabbit (Rb); Sheep (Sh); Chicken (Ch); Bovine (Bov); Goat (Gt); Immunohistochemistry (IHC); Immunofluorescence (IF); Immunopanning (IPan); Western Blot (WB); Immunohistochemistry/paraffin embedded (IHP); Immunoprecipitation (IP); Immunocytochemistry (IC)



Figure 1. Immunohistochemical staining of Neurotrophin 3 (NT3) in crushed rat peripheral nerve using rabbit antibody to recombinant human NT3, Cat# R-098-100.

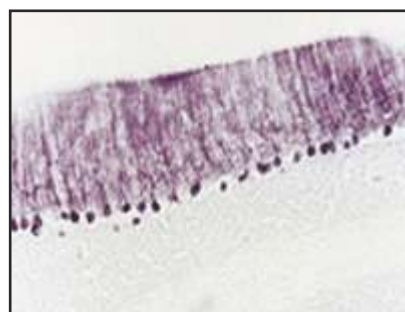


Figure 2. Immunohistochemical staining of Neurotrophin 3 (NT3) in rat Purkinje cells of the cerebellum using rabbit antibody to mouse NT3, Cat# R-175-20.

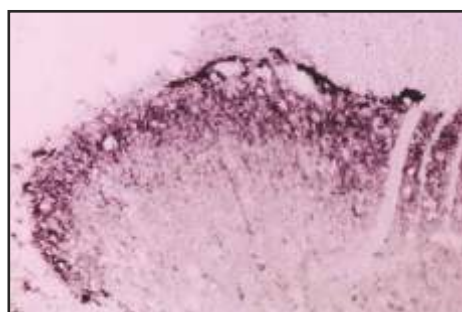


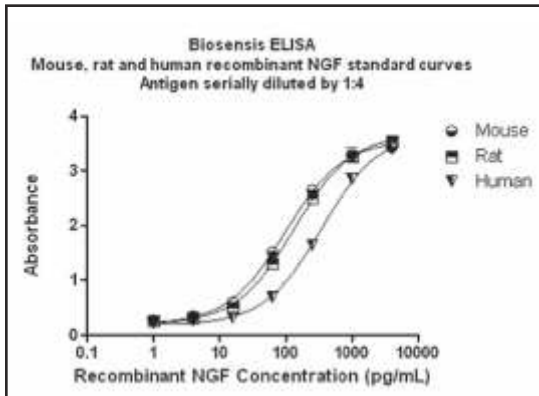
Figure 3. Pro-BDNF staining within the rat spinal cord dorsal horn. Normal cryostat sections of adult rat cord were stained with recombinant human anti-proBDNF Cat# R-176-20 and detected with HRP labelled anti-rabbit antibody. Dilution 1:2000 in Human mouse and rat. (Image courtesy of Dr Xin-fu Zhou).



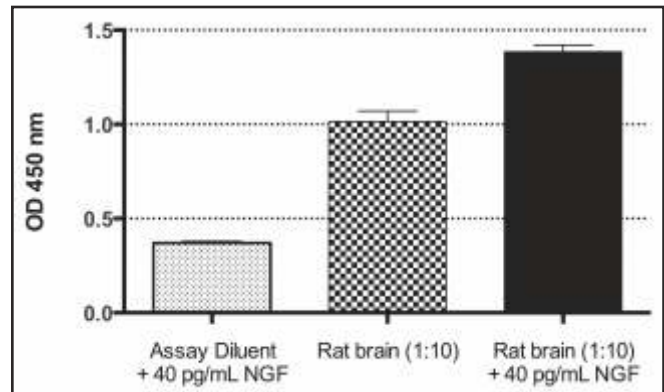
Figure 4. Immunohistochemical staining of brain derived neurotrophic factor (BDNF) in rat spinal cord using rabbit polyclonal to recombinant human BDNF, Cat# R-088-100.

ELISA Kits - New NGF *Rapid*TM ELISAs

- Biosensis has redeveloped **faster** and more **sensitive** NGF ELISA Kits for human, mouse and rat NGF
- Now you can assay with high sensitivity and accuracy and get your results in **less than 4hrs!**
- All of our ELISA kits are available in **1-Plate** or **2-Plate** (96/192 well) formats!



• Representative standard curves of our NGF *Rapid*TM ELISA kits



• Spike and recovery experiment with NGF using BEK-2214-2P

NGF *Rapid*TM ELISA Kits

	Target	Code (2 Plate)	Code (1 Plate)	Species reactivity	Sensitivity	Range
NEW	NGF <i>Rapid</i> TM	BEK-2212-2P	BEK-2212-1P	Hu	2 pg/mL	3.9 pg/mL - 250 pg/mL
NEW	NGF <i>Rapid</i> TM	BEK-2213-2P	BEK-2213-1P	Ms	2 pg/mL	3.9 pg/mL - 250 pg/mL
NEW	NGF <i>Rapid</i> TM	BEK-2214-2P	BEK-2214-1P	Rat	2 pg/mL	3.9 pg/mL - 250 pg/mL

Biosensis has an extensive range of NGF ELISA Kits. Please find more of our range below:

NGF ELISA Kits

Target	Code (2 Plate)	Code (1 Plate)	Species reactivity	Sensitivity	Range
Human NGF/NGF beta	BEK-2075-2P	BEK-2075-1P	Hu, Ms, Rat	< 1 pg/mL	15.6 pg/mL - 1,000 pg/mL
Mouse NGF/NGF beta	BEK-2076-2P	BEK-2076-1P	Hu, Ms, Rat	< 1 pg/mL	31.2 pg/mL - 2,000 pg/mL
Rat NGF/NGF beta	BEK-2077-2P	BEK-2077-1P	Hu, Ms, Rat	< 1 pg/mL	15.6 pg/mL - 1,000 pg/mL

Coming soon: Pro-NGF *Rapid*TM ELISA

Biosensis has over 150 ELISA Kits. Find more of our extensive range below:

Other Neurotrophin ELISA Kits

Target	Code (2 Plate)	Code (1 Plate)	Species reactivity	Sensitivity	Range
NT3	BEK-2078-2P	BEK-2078-1P	Hu	< 2 pg/mL	15.6 pg/mL - 1,000 pg/mL
NT3	BEK-2079-2P	BEK-2079-1P	Ms	< 2 pg/mL	15.6 pg/mL - 1,000 pg/mL
NT3	BEK-2080-2P	BEK-2080-1P	Rat	< 2 pg/mL	15.6 pg/mL - 1,000 pg/mL
TrkA	BEK-2201-2P	BEK-2201-1P	Rat	< 10 pg/mL	156 pg/mL - 10,000 pg/mL
TrkB	BEK-2178-2P	BEK-2178-1P	Ms	< 5 pg/mL	93.8 pg/mL - 6,000 pg/mL

Coming soon: New p75NTR *Rapid*TM ELISA

Other Growth Factor ELISA Kits

Target	Code (2 Plate)	Code (1 Plate)	Species reactivity	Sensitivity	Range
GDNF	BEK-2166-2P	BEK-2166-1P	Hu	< 4 pg/mL	31.2 pg/mL - 2,000 pg/mL
GDNF	BEK-2020-2P	BEK-2020-1P	Rat	< 4 pg/mL	31.2 pg/mL - 2,000 pg/mL
IGF1	BEK-2149-2P	BEK-2149-1P	Ms	< 5 pg/mL	62.5 pg/mL - 4,000 pg/mL
IGF1	BEK-2150-2P	BEK-2150-1P	Rat	< 5 pg/mL	62.5 pg/mL - 4,000 pg/mL
VEGF	BEK-2108-2P	BEK-2108-1P	Hu	< 1 pg/mL	31.2 pg/mL - 2,000 pg/mL
VEGF	BEK-2110-2P	BEK-2110-1P	Ms	< 2 pg/mL	15.6 pg/mL - 1,000 pg/mL
VEGF	BEK-2109-2P	BEK-2109-1P	Rat	< 1 pg/mL	15.6 pg/mL - 1,000 pg/mL

Coming soon: New GDNF *Rapid*TM ELISA

Biosensis Antibody Sample Packs:

Anti-Neurotrophin Sample Packs and Kits - Purified

Neurotrophin Antibody	Kit 1	Code: BAK-100-K	Sample Pack 1	Code: BAK-100-SP
Sheep anti-NGF	500 µg		100 µg	
Sheep anti-BDNF	500 µg		100 µg	
Sheep anti-NT3	500 µg		100 µg	
Sheep anti-NT4/5	500 µg		100 µg	
Control (Ig antibodies)	500 µg		100 µg	

Anti-Neurotrophin Sample Packs and Kits - Whole Serum

Neurotrophin Antibody	Kit 2	Code: BAK-200-K	Sample Pack 2	Code: BAK-200-SP
Sheep anti-NGF	100 µl		20 µl	
Sheep anti-BDNF	100 µl		20 µl	
Sheep anti-NT3	100 µl		20 µl	
Sheep anti-NT4/5	100 µl		20 µl	
Control (Ig antibodies)	100 µl		20 µl	

ELISA Kits - BDNF

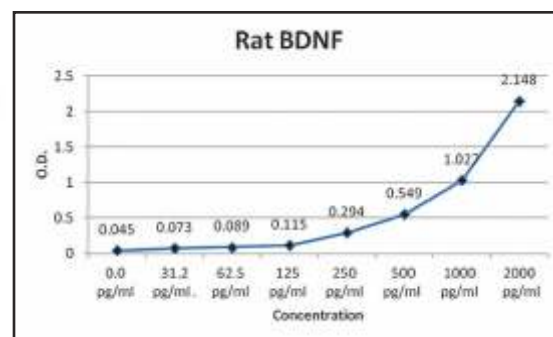
BDNF belongs to the neurotrophin family and regulates the survival and differentiation of neurons during development. The alterations in BDNF expression induced by various kinds of brain insult including stress, ischemia, seizure activity and hypoglycemia, may contribute to some pathologies such as depression, epilepsy, Alzheimer’s Disease, and Parkinson’s Disease. BDNF promotes the survival of neuronal populations that are all located either in the central nervous system or directly connected to it. BDNF is also a major regulator of synaptic transmission and plasticity at adult synapses in many regions of the CNS.

See page 8 for our new **BDNF Rapid™ ELISA:**
Cat# BEK-2211-2P

BDNF ELISA Kits

Target	Code (2 Plate)	Code (1 Plate)	Species reactivity	Sensitivity	Range
Human BDNF	BEK-2002-2P	BEK-2002-2P	Hu, Ms, Rat	< 2 pg/mL	31.2 pg/mL - 2,000 pg/mL
Rat BDNF	BEK-2000-2P	BEK-2000-2P	Hu, Ms, Rat	< 2 pg/mL	31.2 pg/mL - 2,000 pg/mL
Mouse BDNF	BEK-2003-2P	BEK-2003-2P	Hu, Ms, Rat	< 2 pg/mL	31.2 pg/mL - 2,000 pg/mL

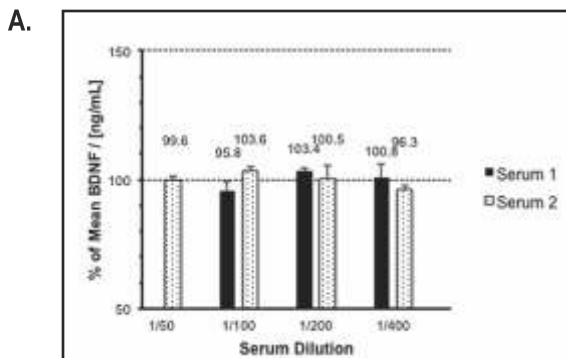
This standard curve is for demonstration purposes only. A standard curve should be generated for each assay.



ELISA Kits - BDNF *Rapid*TM Cat# BEK-2211-2P

- Now measure BDNF in serum, cell culture supernatants and brain extracts in less than 3 hours
- Quantify BDNF in **Human and Rodent** samples against a **WHO approved BDNF standard**
- Our kits contain **pre-coated 96 well strip plates** - use only what you need!
- High sensitivity gives you the advantage of using **small sample volumes**
- **Focus** on your experiment - let us take the worry out of reliable quantification of BDNF concentrations

Analysis of two human serum samples:



B.

		BDNF / [ng/mL]			Intra-Assay	Inter-Assay
		Mean	SD	SEM	CV	CV
1	Day 1	25.8	1.3	0.9	4.9%	5.3%
	Day 2	26.1	1.5	0.9	5.9%	
	Day 3	24.4	0.9	0.7	3.8%	
2	Day 1	24.9	0.4	0.3	1.7%	7.6%
	Day 2	25.1	1.8	1.1	7.3%	
	Day 3	22.0	0.5	0.4	2.3%	

Our kit gives reliable results in a wide dilution range (A) and with high confidence (B)

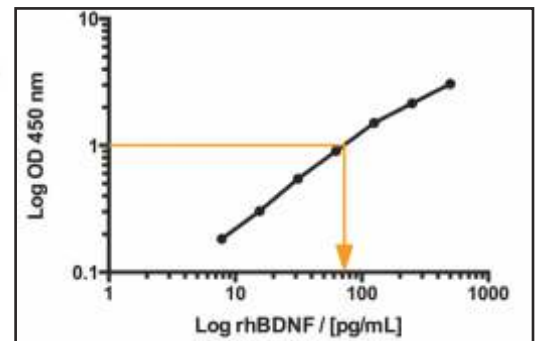
BDNF *Rapid*TM ELISA Kit

Target **Code (2 Plate)** **Code (1 Plate)** **Species reactivity** **Sensitivity** **Range**

NEW BDNF BEK-2211-2P BEK-2211-1P Hu, Ms, Rat 2 pg/mL 7.8 pg/mL - 500 pg/mL

*Rapid*TM

Typical standard curve generated with our BDNF *Rapid*TM ELISA Kit. Cat# BEK-2211-2P



Coming soon: Pro-BDNF *Rapid*TM ELISA

Contact us:

Biogeniux Medsystems Pvt. Ltd.

412-B, Jyoti Shikhar Building, District Center,
Janakpuri, New Delhi-110058, INDIA

E-mail : contact@biogeniux.com • Web : www.biogeniux.com

Phone : +91-11-4875-4875 • Fax : +91-11-2561-2008

biosensis.com
Make sense of it!