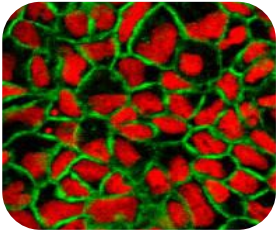


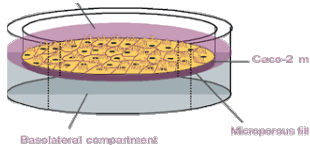
The CacoReady™ Assay !!

A Mucus Secreting Ready-to-use Concept For In Vitro Intestinal Absorption Evaluation

CacoReady™ is an innovative cell-based & ready-to-use kit. The kit consists of 24 and 96 insert-integrated permeable supports seeded with differentiated and polarized Caco-2 barriers on polycarbonate microporous filters. CacoReady™ allows in vitro intestinal absorption evaluation of drug targets. CacoReady™ be used up to 5 days after ideal cell barrier differentiation at day 21. CacoReady™ is flexible since plates can is a time and cost-saving tool for early stage drug discovery & development.



Caco-2 barrier (21-days)



CacoReady™ Applications

- Evaluation of oral absorption efficiency, oral bioavailability and oral toxicity.
- Study of mechanisms involved in oral and intestinal absorption.
- Studies of Drug Transporters and Drug-Drug Interaction.
- Suitable for research on new delivery systems.

CacoReady™ Features

- Cell-based
- Ready-to-use
- 24 and 96-HTS insert- integrated plate format
- Exclusive solid shipping medium

Four Simple Steps of CacoReady™

RECEIVE

Ready-to-use Caco-2 cell barrier

LIQUIFY

Liquefying of solid shipping medium
at 37°C

APPLY

Incubation with test compound

ASSAY

Assessment of permeability
/transport end point

- Provides 21-day cell barrier allowing reduction of in house maintenance of Caco-2 cell cultures.
- High flexibility as the kit is useable up to 5 days after 21-day cell barrier differentiation.
- Time saving and cost-effective.
- Adaptable to automated procedures and HTS.
- High reproducibility.
- Easy and clean handling.
- Full cell functionality after transportation.
- Shipping medium easy to remove by liquefaction at 37°C.

Formats

CacoReady™ kit provides polarized Caco-2 cells on 24 and 96-HTS insert-integrated plates.

CacoReady™ cell-based kit, 24 insert-integrated:

- Costar plate, Ref. KRECE-CCR01
- Millipore plate, Ref. KRECE-CCR03
- Express plate, Ref. KRECE-CCR10
- Individual-well plate, Ref. KRECE-CCR04

CacoReady™ cell-based kit, 96 insert-integrated:

- Millipore plate, Ref. KRECE-CCR50



Imported & Marketed in India by:

Biogeniux Medsystems Pvt. Ltd.

Head Office : 412-B, Jyoti Shikhar Building, District Center, Janakpuri, New Delhi-110058

Phone : +91-11-4875 4875 • Fax : +91-11-2561 2008

E-mail : contact@biogeniux.com • Web : www.biogeniux.com