



COPAN

*Liquid Based Microbiology
&
Walk Away Specimen Processor*

LBM



Biogenuix[®]

Diagnostic Microbiology involves the collection of a diversity of samples from the patient to determine the etiology of diseases. Samples range from solids, like tissue, semi-solids, like feces, and samples of varying viscosity, such as sputum, pus, aspirates and urine. In addition to this range of different sample consistencies, a large proportion of microbiology samples are collected on swabs. The **diversity of specimen types** has always presented a particular challenge for bacteriology laboratories, with samples arriving in **containers of varying shapes and sizes** that are **processed entirely by hand**. Specimen processing is one of the most important steps in the pre-analytical phase as: downstream reading, interpretation and reporting by technical staff is heavily dependent on the quality of specimen setup. Careful accessioning, selection of the right material, pre-processing to liquefy the sample, then diligent planting and streaking are steps needed. Manipulating and processing samples of completely different consistencies is difficult with automation and it had not been possible until now. For microbiology to improve efficiencies in specimen processing and the potential for automation, a liquid based microbiology approach is needed; but this goal can only be achieved first with innovations in specimen devices that will transfer the sample into liquid phase in standardized containers. Liquid Based Microbiology (LBM) systems can then be integrated with compatible robotic planting and streaking instrumentation, like the WASP®: Walk-Away Specimen Processor, or other automated specimen processing platforms, including those for molecular biology applications.

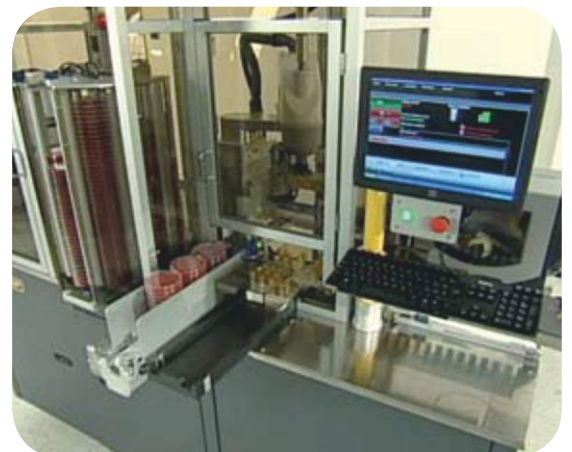


There had been many obstacles to move microbiology specimens into liquid, but a Liquid Based Microbiology approach has been a major focus for Copan. The Company's name is an acronym from the expression "**Collection and Preservation for Analysis**" and it describes Copan's mission of innovation to **improve pre-analytics and specimen processing**. The possibility to transform microbiology specimens into a solution is a revolutionary way to standardize samples, providing a homogeneous suspension, allowing more efficient and reliable handling of the specimen during the whole diagnostic process and providing the possibility for multiple identical sample aliquots.

The **invention of Flocked Swabs, FLOQSwabs™** by Copan, was a major breakthrough for Liquid Based Microbiology, as swabs are a particularly difficult specimen challenge. **Traditional fiber wrapped swabs act like an absorbent mattress, but entrap a large proportion of the sample within the fibers.** The technologist must be actively involved in the processing of the specimen for fiber wrapped swabs to ensure adequate sample

elution and assay sensitivity. **Flocked swabs, which comprise of many thousands of perpendicularly sprayed-on short nylon fibers to the tip of an applicator, collect more sample than traditional swabs and very efficiently release the sample when in contact with liquid or surface.** Flocked technology eliminates the need for any intervention by a technologist to manipulate the swab and, when combined with various Copan specimen collection and preservation media for bacteriology and virology (e.g. ESwab and UTM), it provides a system for converting the entire sample to liquid phase. Copan has extended the liquid based concept to other fields of pathology, combining FLOQSwabs™ with a molecular transport medium (ENat) and a molecular and cytology transport medium in the case of CyMol.

Copan FLOQSwabs™ has made the concept of a Liquid Based Microbiology, LBM, and automation in bacteriology a reality. This has driven Copan to develop other LBM products to standardize the entire process. Utilizing standardized containers, Copan has developed Fecal Swab and UriSwab collection and preservation systems; and devices for specimen processing, such as SLSolution (DTT Reagent) for easy sputum processing; CAT, LIM, and Selenite enrichment Broths for single organism screening. These latest innovations mean that **all microbiology most common samples: swabs, urines, feces and sputum are now in liquid phase and can be automatically processed** on Copan's WASP® instrument. The selective enrichment broths serve to maximize the utilization of automation and bring further efficiencies to specimen processing.





Floq Swabs The next Generation of Sample Collection	eSwab Multipurpose Collection & Transport System, Maintains Viability of Aerobes, Anaerobes & Fastidious Bacteria, Preserves Nucleic Acids & Antigens	UTM For Collection, Transport, Maintenance and Long Term Freeze Storage of Virus, Chlamydia, Mycoplasma & Ureaplasma	UriSwab Advanced System for Collection, Transport and Preservation of Urine
Fecal Swab Advanced System for Collection, Transport and Preservation of Fecal Specimens	Selenite Broth Enrichment Medium for Salmonella spp.	TSB Salt Broth Enrichment Broth for S. aureus spp. (including MRSA) with NaCl	Cat Broth For Isolation and Preservation of Candida and Trichomonas from Vaginal Specimens
Lim Broth Enrichment Medium for Successive Isolation of Group B Streptococci	SL Solutions Convenient, Ready to Use System for Liquefying Sputum Specimens	CyMol Transport and Preservation for Cells and Nucleic Acids	eNat Transport, Stabilization and Preservation for Nucleic Acids

Custom products and modified formulations are available on request; conditions apply.

PRODUCT APPLICATIONS

Product	Formats Available	Used at POC?	LABORATORY APPLICATIONS								
			Suitable for WASP	Culture	Gram Stain	Molecular Biology	Rapid Antigen Test	DFA	Pre-Enrichment Broth	Cytology	Reagent for Liquefying
Eswab	Kits (Tube and Swab)	Yes	•	•	•	•	•	•			
UTM	Tubes or Kits (Tube and Swab)	Yes		•		•	•	•			
UriSwab	Kits (Tube and Sponge Applicator)	Yes	•	•	•	•					
fecalSwab	Kits (Tube and Swab)	Yes	•	•		•	•				
seleniteBroth	Tubes	No	•	•						•	
TSBSalt Broth	Tubes or Kits (Tube and Swab)	Yes	•	•		•				•	
catBroth	Tubes (Collection Device sold separately)	Yes	•	•		•	•			•	
limBroth	Tubes or Kits (Tube and Swab)	Yes	•	•		•				•	
SLSolution	Tubes or Kits (Tube and Sputum transfer)	No	•								•
CyMol	Tubes (Collection Device sold separately)	Yes				•	•	•		•	
eNat	Tubes or Kits (Tube and Swab)	Yes				•	•				

*Products available with a separate product code for the version intended for use on WASP automation
Custom Kits Available



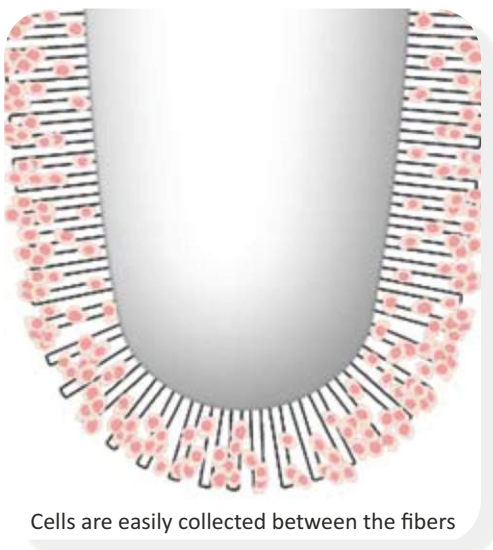
Fiber Wrapped Swab



FLOQSwabs™



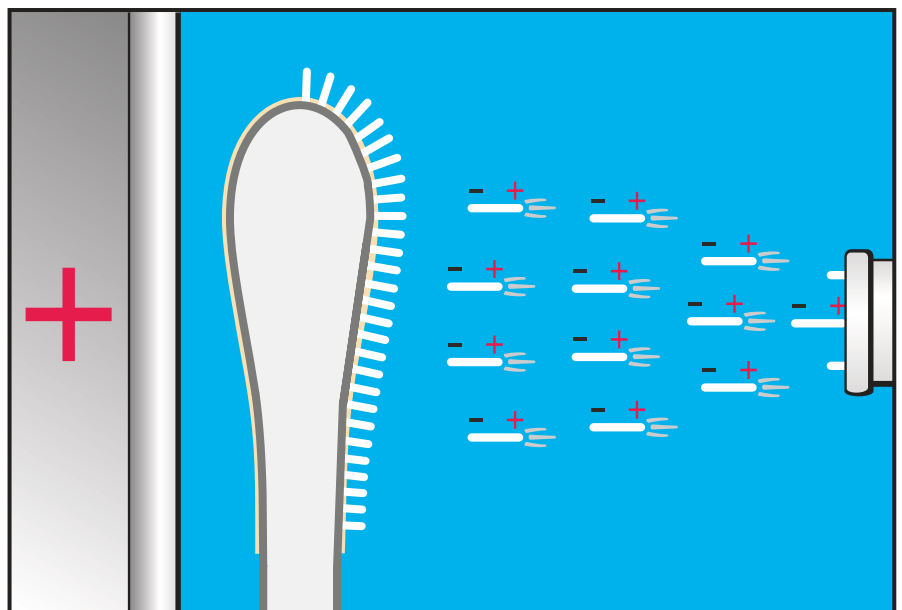
Traditional Fiber Swabs consist of Fiber Wads FLOQSwabs™ have no inside



Cells are easily collected between the fibers

- **Copan Flocked Swabs, FLOQSwabs™**, have no mattress core to disperse and entrap the precious sample, like traditional fiber wound swabs. In stark contrast, because of the FLOQSwabs™ design, the entire sample stays close to the surface for fast and complete elution. FLOQSwabs™ perpendicular fibers act like a soft brush and allow improved collection of cell samples. Capillary action between the fiber strands facilitates strong hydraulic uptake of liquid samples.
- **Rapid and High Efficiency Elution, For Better Sensitivity**
Up to 95% of the sample is instantaneously released the moment the FLOQSwabs™ is mixed with assays reagents or placed in a buffer solution or transport medium.
- **Improved Sample Collection**
Velvet brush-like texture rapidly and efficiently dislodges cells and collects liquid by capillarity. Cells are easily collected between fibers.
- **Quantitative Volume Transfer**
Measurable and consistent uptake and transfer from patient to test tube.
- **Exclusive Technology and Unique Benefits**
Patented flocked swab technology finally opens the door to Liquid Based Microbiology approach and automated laboratory workflow.
- **Ergonomic and Anatomic Design**
For improved patient comfort and efficiency in specimen collection.

Patent World Wide			
European	#1608268	Australian	#2004226798
Canadian	#2,515,205	New Zealand	#541560
Japanese	#4579902	US	#8,114,027 and #8,317,728
Chinese	#101103931		

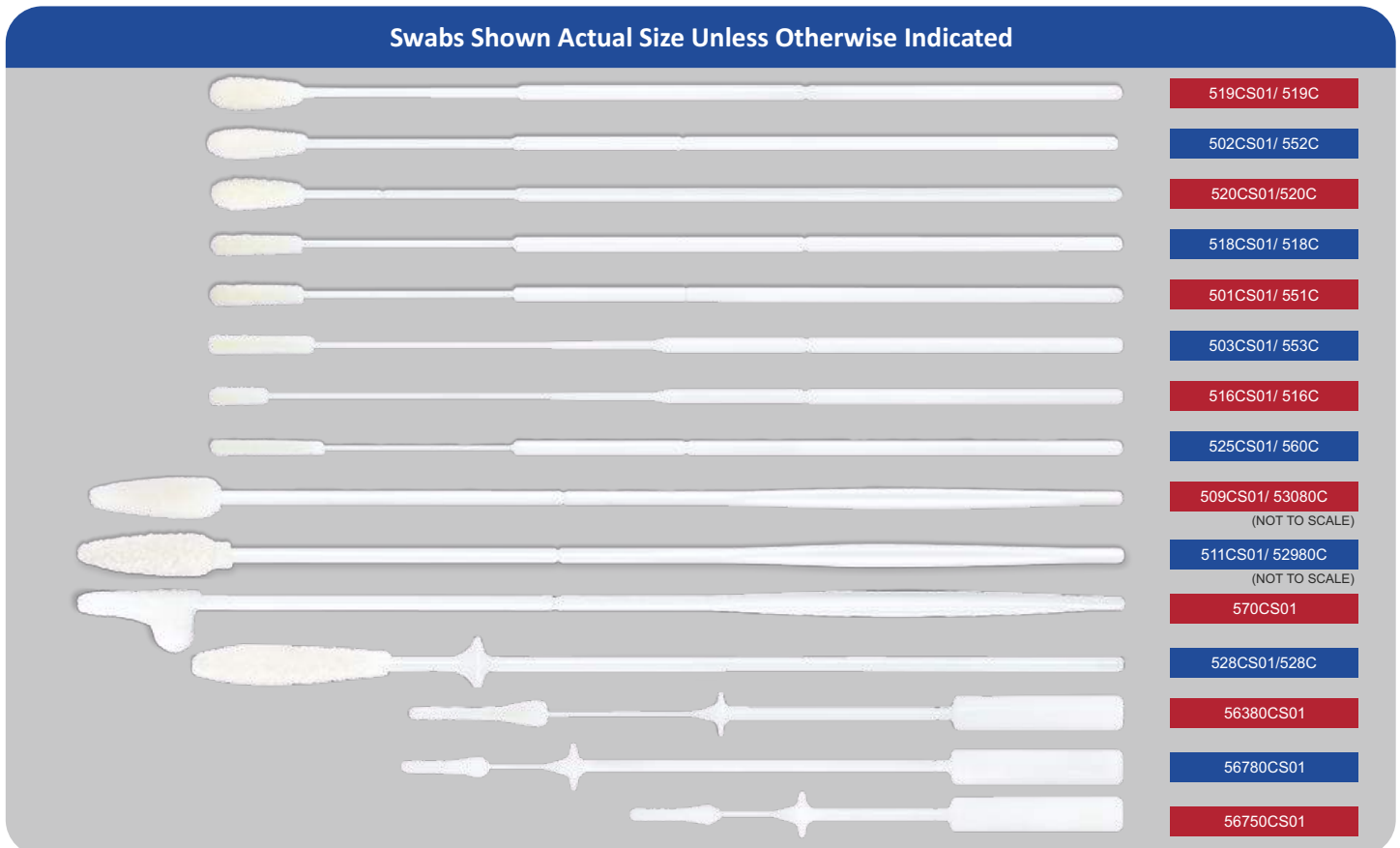


Flocking Process



Cat. No. Nylon Flocked Dry Swabs IN PEEL POUCH	Cat. No. Nylon Flocked Dry Swabs IN TUBE	NYLON FLOCKED DRY SWABS Description	Breakpoint Distance	Packaging
519CS01	519C	Regular Flocked Swab, Nylon Tip, Plastic Applicator, Sterile	100 mm	10X100 PCS
502CS01	552C	Regular Flocked Swab, Nylon Tip, Plastic Applicator, Sterile	80 mm	10X100 PCS
520CS01	520C	Regular Flocked Swab, Nylon Tip, Plastic Applicator, Sterile	30 mm	10X100 PCS
518CS01	518C	Minitip Flocked Swab, Nylon Tip, Plastic Applicator, Sterile	100 mm	10X100 PCS
501CS01	551C	Minitip Flocked Swab, Nylon Tip, Plastic Applicator, Sterile	80 mm	10X100 PCS
503CS01	553C	Flexible Nasopharyngeal Flocked Swab, Nylon Tip, Plastic Applicator, Sterile	100 mm	10X100 PCS
516CS01	516C	Pediatric Flocked Swab, Nylon Tip, Plastic Applicator, Sterile	100 mm	10X100 PCS
525CS01	560C	Ultra-Thin/Urethral Flocked Swab, Nylon Tip, Plastic Applicator, Sterile	80 mm	10X100 PCS
509CS01*	53080C**	Endocervical Flocked Swab, Nylon Brush Tip, Plastic Applicator, Sterile	80 mm	10X50 PCS* 10X100 PCS**
511CS01*	52980C**	Endocervical Flocked Swab, Nylon Velvet Tip, Plastic Applicator, Sterile	80 mm	10X50 PCS* 10X100 PCS**
570CS01	N/A	L-Shaped Endo/Esocervical Flocked Swab, Nylon Tip, Plastic Applicator, Sterile	80 mm	10X50 PCS
528CS01	528C	Saliva/Buccal Cells Flocked Swab, Stopper at 46mm, Nylon Tip, Plastic Applicator, Sterile	N/A	10X100 PCS
56380CS01	N/A	Mid Turbinate Adult Flocked Swab, Nylon Tip, Plastic Applicator, Sterile	80 mm	10X100 PCS
56780CS01	N/A	Mid Turbinate Pediatric Flocked Swab, Nylon Tip, Plastic Applicator, Sterile	80 mm	10X100 PCS
56750CS01	N/A	Mid Turbinate Pediatric Flocked Swab, Nylon Tip, Plastic Applicator, Sterile	50 mm	10X100 PCS

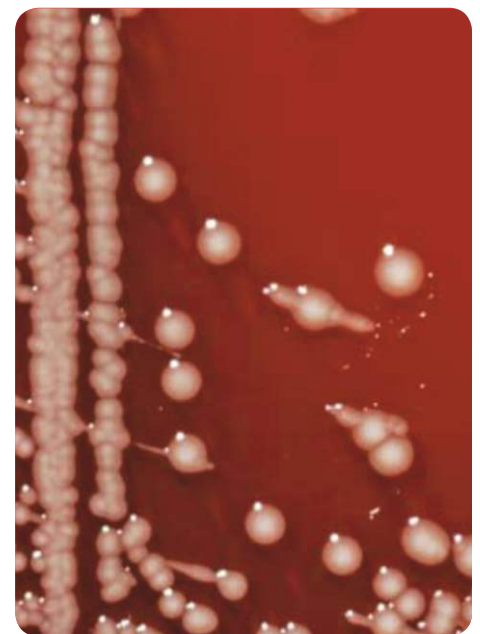
Swabs Shown Actual Size Unless Otherwise Indicated



Eswab™ is the only liquid-based multipurpose collection and transport system that maintains viability of aerobic, anaerobic and fastidious bacteria for up to 48 hours at room (GC up to 24 hours) and refrigerator temperature. Eswab™ is a truly open platform suitable for automation, gram stains, traditional culture, and molecular assays, just to name a few of the applications.

With a Nylon® Flocked Swab and 1ml of modified Liquid Amies, Eswab elutes the entire sample into the medium providing to the lab aliquots of liquid sample suspension which can be used to run multiple tests from a single specimen collected from a patient. Eswab™ is compatible with culture, as well as with molecular assays. It represents an ideal collection and transport system to be used for automated liquid handling, such as Copan's WASP®: Walk-Away Specimen Processor.

Thanks to the exclusive Flocked Swab technology, the specimen is instantaneously and completely eluted to liquid suspension, from the moment the swab is snapped inside the tube after sample collection. The liquid based specimen can then be divided in homogeneous aliquots, so that all investigations are performed from the same sample. After routine diagnostic investigations, residual specimen can be retained for additional or repeat tests.





Key Features:

- **Top performance in preserving viability of Bacteria**
Eswab™ complies with the M40-A Protocol as per CLSI Guidelines (DIN 58942). The compliance is endorsed by numerous independent scientific publications, all available on Copan website.
- **Facilitates Automation**
Specimen moves from swab to liquid phase, allowing automated liquid handling, for both traditional testing techniques and molecular biology. Eswab™ smaller size container is compatible with tube sorting systems available at pre-analytics stations.
- **Expands Testing Capabilities**
By using Eswab™, laboratories can run multiple tests from the same specimen sample suspension.
- **Replaces Multiple Collection Devices with Just One**
Eswab™ preserves nucleic acids and antigens of Bacteria, Viruses, Chlamydia, Ureaplasma and Mycoplasma. Its versatility allows laboratories to simplify and streamline specimen management at all steps. Original specimen is available for back up purposes.
- **Easy to Use**
Simply collect the sample and snap the applicator. The sample is eluted and released from the Flocked swab when it comes in contact with the transport medium.

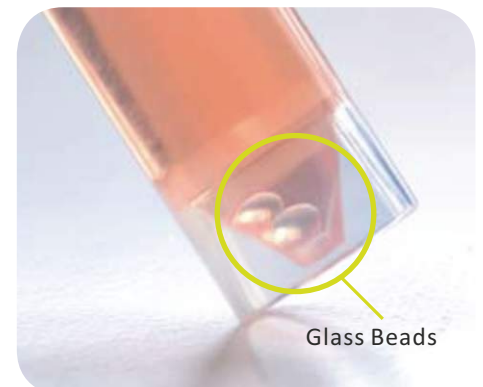
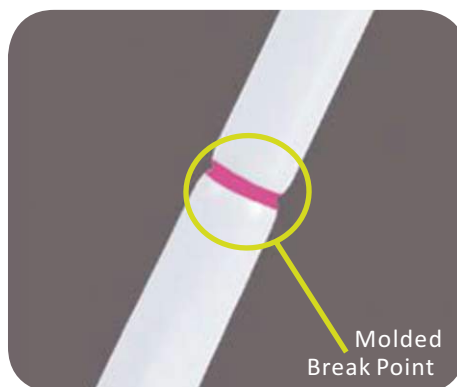


Cat. No	Description	Pack Size	Color Code	Sampling Site
480CE	Sterile single use sample collection pack containing polypropylene screw-cap tube with internal conical shape filled with 1ml of Liquid Amies Medium. - One regular size applicator swab with flocked nylon fiber tip.	50 kits per box 10 x 50 kits per case	Pink	Nose, Throat, Vagina, Rectum, Wound and Fecal Samples
481CE	Sterile single use sample collection pack containing polypropylene screw-cap tube with internal conical shape filled with 1ml of Liquid Amies Medium. - One minitip applicator swab with flocked nylon fiber tip.	50 kits per box 10 x 50 kits per case	Orange	Eye, Ear, Throat, Nasal Passages, Urogenital Tracts
482CE	Sterile single use sample collection pack containing polypropylene screw-cap tube with internal conical shape filled with 1ml of Liquid Amies Medium. - One pernasal applicator swab with flocked nylon fiber tip.	50 kits per box 10 x 50 kits per case	Blue	Nasopharynx and Pediatric Sample Collection
483CE	Sterile single use sample collection pack containing Polypropylene screw-cap tube with internal conical shape filled with 1ml of Liquid Amies Medium. - One urethral applicator swab with flocked nylon fiber tip.	50 kits per box 10 x 50 kits per case	Orange	Urogenital Tract
484CE	Sterile single use sample collection pack containing Polypropylene screw-cap tube with internal conical shape filled with 1ml of Liquid Amies Medium. - One pediatric applicator swab with flocked nylon fiber tip.	50 kits per box 10 x 50 kits per case	Blue	Pediatric Sample Collection
480CESR	Sterile single use sample collection pack containing polypropylene screw-cap tube with internal conical shape filled with 1ml Modified Liquid Amies Medium, and one regular size applicator swab with flocked nylon fiber tip. - Double Wrapped Packaging for use in sterile zone	50 kits per box 10 x 50 kits per case	Pink	Nose, Throat, Vagina, Rectum, Wound and Fecal Samples
493CE02	Sterile single use sample collection pack containing ESwab MRSA System Polypropylene screw-cap tube with internal conical shape filled with 1ml of Liquid Amies Medium. - Two regular applicator swabs with flocked nylon fiber tip.	50 kits per box 10 x 50 kits per case	Pink	MRSA Sample Collection
493CE03	Sterile single use sample collection pack containing ESwab MRSA System: - Three regular applicator swabs with flocked nylon fiber tip. - Polypropylene screw-cap tube with internal conical shape filled with 1ml of Liquid Amies Medium.	50 kits per box 10 x 50 kits per case	Pink	MRSA Sample Collection

In the testing laboratory, when the Eswab™ cap is unscrewed and removed, the swab applicator stick is securely attached to the cap. This capture cap feature allows the operator to conveniently remove the swab and perform various microbiology analyses using the tube cap as a handle to manipulate the swab. The capture cap feature is available with 480CE and 480CESR. The Eswab™ product line includes a range of regular size and minitip applicator swabs for different applications, including a system for MRSA screening.

Virus, Chlamydia, Mycoplasma and Ureaplasma

- **One transport - multiple tests - no sample rejection**
 - Culture - all viruses, Chlamydia, Mycoplasma and Ureaplasma
 - Enzyme Immuno Assays (EIA)
 - PCR Conventional and Real Time
 - Commercial Nucleic Acid amplification assays including Chlamydia trachomatis and Neisseria gonorrhoeae (Ct/Ng).
- **Stable at Room Temperature For 18 Months**
- **Organism viability maintained at room temperature** and on ice. Suitable also for long term freeze storage
- **Copan flocced swabs increase sample release**
UTM™ is supplied with unique flocced swabs, which increase sample release and sensitivity in virus cell culture and other assays.
- **Choice of tube size, medium fill volume and product format**
Variety of patient specimen collection kits available, comprising of tubes of media and swabs or bulk packs of media tubes only.
- **Internal conical shaped tube**
Tubes stand upright on the bench without the need for tube racks.
- **Glass beads in each tube**
Assist the release of sample from the swab without damaging the cells, when mixing prior to analysis with a vortex mixer.





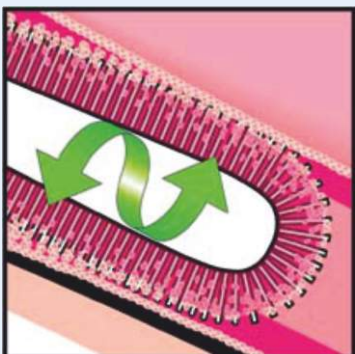
How To Use



Nasopharyngeal Sample Collection



Step 1: Insert the FLOQSwab™ into the nasal passage until a slight resistance is met.



Step 2: Rotate the swab two to three times and hold the swab in place for 5 seconds to ensure maximum absorbency. Strong capillary hydraulics between the strands of nylon maximizes sample collection.



Step 3: Put the swab in the UTM transport medium and break the shaft at the painted breakpoint. Sample elutes automatically and rapidly because it is held very close to the surface in a totally open structure. This does not hinder the flow dynamics so the entire sample is released.



Cat. No.	UTM™ Without Swabs	Pack Size
330C	16 x100 mm Screw Cap Tube, 3ml of UTM Transport and Preservation Medium	50 pcs. per box 6 x 50 per case
350C	12 x 80 mm Screw Cap Tube, 1ml of UTM Transport and Preservation Medium	50 pcs. per box 6 x 50 per case
Cat. No.	UTM™ With Swabs	Pack Size
346C	16 x 100mm Screw Cap Tube Containing 3ml of UTM Transport and Preservation Medium, 1 Regular Flocked Swab	50 pcs. per box 6 x 50 per case
307C	16 x 100mm Screw Cap Tube Containing 3ml of UTM Transport and Preservation Medium, 1 Mini Tip Flocked Swab	50 pcs. per box 6 x 50 per case
305C	16 X 100mm Screw Cap Tube Containing 3ml of UTM Transport and Preservation Medium, 1 Nasopharyngeal Flocked Swab	50 pcs. per box 6 x 50 per case
359C	12 x 80mm Screw Cap Tube Containing 1ml of UTM Transport and Preservation Medium, 1 Regular Flocked Swab	50 pcs. per box 6 x 50 per case
361C	12 x 80mm Screw Cap Tube Containing 1ml of UTM Transport and Preservationn Medium, 1 Mini Tip Flocked Swab	50 pcs. per box 6 x 50 per case
360C	12x80mm Screw Cap Tube Containing 1ml of UTM Transport and Preservation Medium, 1 Nasopharyngeal Flocked Swab	50 pcs. per box 6 x 50 per case

➤ **Easy to use**

Simply urinate directly onto the sponge applicator or dip into sample cup, insert the sponge into the tube, close and send it to the lab for analysis. No needles needed, no additional costs for disposal.

➤ **Preservatives for optimal performance**

Boric Acid and Sodium Formate, polymerised into the sponge are activated on contact with urine. No risk of overgrowth or overkilling during transport.

➤ **Safe, shatterproof polypropylene skirted tube**

The internal conical shape enables centrifugation of samples and allows tubes to stand upright on the laboratory bench. No leakage guaranteed.

➤ **Viability of bacteria at refrigerated and room temperature conditions for up to 48 hours**

➤ **Suitable for traditional culture, as well as for preservation of nucleic acids**

➤ **Smart Design**

Copan UriSwab comprises of a screw cap tube containing a plastic applicator stick attached to the tube cap. The applicator stick has cylindrical shaped sponges located at the opposite end to the cap.



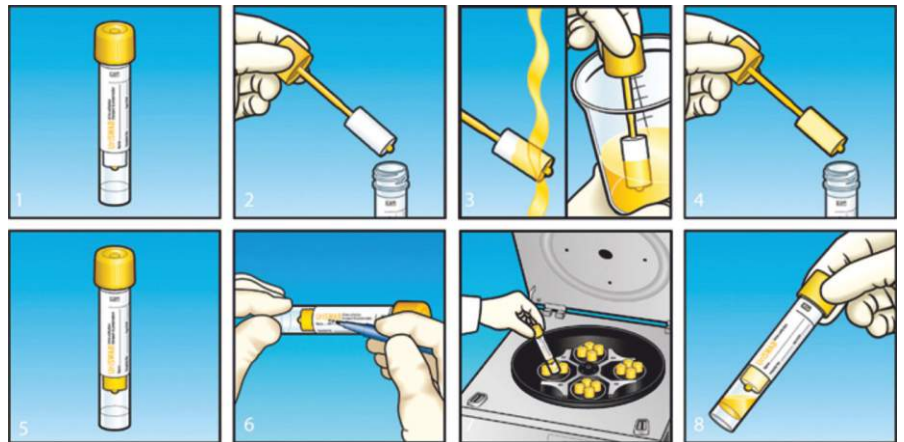
How to use UriSwab

1. Unscrew Cap
2. Remove Applicator
3. Hold Applicator Sponge in Stream of Urine

OR

Dip Applicator Sponge into Urine Sample
Return Applicator to Tube

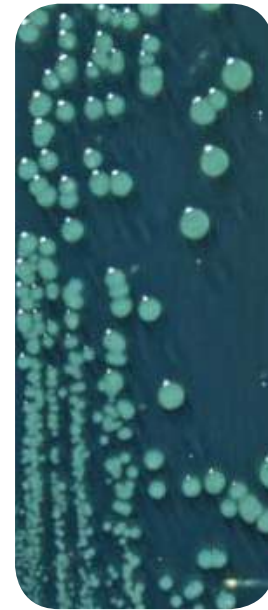
4. Sponge Retains sample
6. Write Name on Tube
7. Centrifuge
8. Sample is Released from Sponge for Use



Cat. No.	Description	Pack Size
802C	Sterile single use sample collection pack containing: one 12 x 80 mm screw cap tube and one plastic Sponge-Applicator device with polyurethane foam sponges. Supplied in bulk packs	100 pcs per box 500 pcs per case
803C	Sterile single use sample collection pack containing: one 16 x 100 mm screw cap tube and one plastic Sponge-Applicator device with polyurethane foam sponges. Supplied in bulk packs	100 pcs per box 500 pcs per case
802CS01	Sterile single use sample collection pack containing: one 12 x 80 mm screw cap tube and one plastic Sponge-Applicator device with polyurethane foam sponges. Sterile individually wrapped	100 pcs per box 500 pcs per case
803CS01	Sterile single use sample collection pack containing: one 16 x 100 mm and one plastic Sponge-Applicator device with polyurethane foam sponges. Sterile individually wrapped.	100 pcs per box 500 pcs per case



- **Optimal solution for the preservation of fecal specimens**
Medium formulation specifically intended to support viability of Enterobacteriaceae.
- **Easy to use**
Suitable for both rectal swabbing or directly from feces. Smaller tube is instrument-ready and easier to transport.
- **Unique Flocked swab**
Guarantees adequate specimen collection and elution of the sample into medium. When opening the tube in the lab, swab is captured by the cap, for easier access to the specimen.
- **Versatile**
Sample can be planted and streaked directly on culture plates or an aliquot transferred to selective enrichment broth. Suitable for PCR.



How to use fecalSwab

1. Open the peel pouch
 2. Remove the flocked swab
 3. Collect the sample directly from the patient
- OR**
- Dip the flocked swab into the fecal sample until swab is completely covered with sample
4. Remove the screw cap from the tube
 5. Insert the flocked swab all the way to the bottom of the tube
 6. Break the swab at the molded breakpoint
 7. Screw the cap tightly to prevent leakage
 8. Write patient's information or apply a label

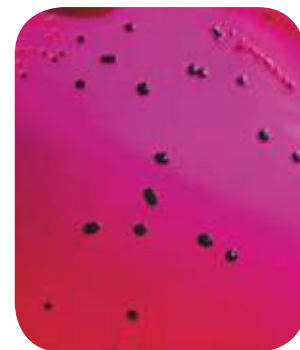
Cat. No.	Description	Pack Size
470CE	FecalSwab Screw Cap Tube 12 X 80mm with 2ml Modified Cary-Blair Medium, 1 Regular Flocked Swab	50 pcs. per box 10 x 50 per case

Enrichment Medium for Salmonella spp.

seleniteBroth



- **Specifically intended for Salmonella isolation**
Sodium selenite is an enrichment medium able to reduce the proliferation of the normal intestinal flora.
- **Ready to use and convenient**
Long shelf-life and stability at room temperature. Shatterproof tube.
- **Compatible with original stool specimen or sample transported with FecalSwab**



Cat. No.	Description	Pack Size
475CE	2ml Selenite Medium in 12 X 80mm Screw Cap Tube	50 pcs per box 6 x 50 per case

TSBSaltBroth

Enrichment Broth for *S. aureus* spp. (including MRSA) with 2,5% NaCl



- **Enrichment Broth for *S. aureus* spp. (incl. MRSA)**
Specifically intended to obtain, after incubation, a specimen suitable for subculture on selective MRSA agar plates.
- **Ready to use and convenient**
Long shelf-life and stability at room temperature. Small plastic tube is robust and easy to transport.
- **Available in different product formats**
Just bulk tubes for use in the lab or with swabs, for sample collection. Custom versions available.

Cat. No.	Description	Pack Size
477CE	2ml Tsb Medium Plus 2,5% NaCl in 12 X 80mm Screw Cap Tube	50 pcs per box 6 x 50 per case
477CE03	2ml Tsb Medium Plus 2,5% NaCl in 12 X 80mm Screw Cap Tube, 3 Regular Flocked Swabs	50 pcs per box 6 x 50 per case

catBroth

For Isolation and Preservation of *Candida* and *Trichomonas* from Vaginal Specimens



- **Selective enrichment medium for *Candida* and *Trichomonas***
Antibiotics inhibit growth of normal bacterial flora and guarantee isolation and preservation of *Candida albicans* and *Trichomonas vaginalis*.
- **Ready to use and convenient**
Long shelf-life and stability at room temperature. Tube is shatterproof and easy to transport.
- **One product format**
Bulk tubes can be used in the lab or can be used with flocked swabs (sold separately) directly at sample collection.

Cat. No.	Description	Pack Size
094CE	2ml CATBroth Medium in 12 X 80mm Screw Cap Tube	50 pcs per box 6 x 50 per case

limBroth

Enrichment Medium for Successive Isolation of group B Streptococci



- **Selective enrichment medium for group B Streptococci**
Antibiotics inhibit growth of normal bacterial flora and guarantee isolation and preservation of *Streptococcus agalactiae* (GBS). Formula is a modification of Todd Hewitt broth.
- **Ready to use and convenient**
Long shelf-life and stability at room temperature. Tube is shatterproof and easy to transport.
- **Available in different product formats**
Just bulk tubes for use in the lab (e.g. from a sample transported in Eswab). Custom versions available.

Cat. No.	Description	Pack Size
476CE	2ml limBroth Medium in 12 X 80mm Screw Cap Tube	50 pcs per box 6 x 50 per case
476CE01	2ml limBroth Medium in 12 X 80mm Screw Cap Tube, 1 Regular Flocked Swab	50 pcs per box 6 x 50 per case

When used with automated processors, broths require a Flocked Swab, with an 80mm breakpoint, as the collection device.



➤ **Ready to use**

Active principle is Dithiothreitol (DTT). The mucolytic agent is contained in a sterile plastic tube. No rehydration steps are necessary.

➤ **Extremely Practical**

One tube - one specimen approach. Add an aliquot of sputum specimen to the tube with a transfer device and vortex; sample is now liquefied and ready to be streaked on culture plates, manually or with automation.

➤ **Additional Advantages**

SLSolution is stable at room temperature and has long shelf-life, thanks to the exclusive Copan active packaging.



Cat. No.	Description	Pack Size
097CE	Copan SLSolution in bulk: -12 X 80mm polypropylene screw-cap tubes with internal conical shape filled with 1ml of DTT solution in liquid phase	100 pcs per box 500 pcs per case
099CE	Copan SLSolution in bulk: -12 X 80mm polypropylene screw-cap tubes with internal conical shape filled with 0,5ml of DTT solution in liquid phase	100 pcs per box 500 pcs per case
095CE	Copan SLSolution Kit: -One 12X80 mm polypropylene screw-cap tube with internal conical shape filled with 1ml of DTT solution in liquid phase -One sterile pasteur pipet for sputum sample transfer	100 pcs per box 500 pcs per case



➤ **Versatile**

CyMol® is suitable for the preservation of nucleic acids as well as cellular morphology. Suitable for Pap Smear Preparation.

➤ **Special formulation**

The mixture of three different types of alcohol guarantees perfect preservation of the specimen and eliminates overgrowth from the normal bacterial flora.

➤ **Choice of Tube Size and Medium Fill Volume:**

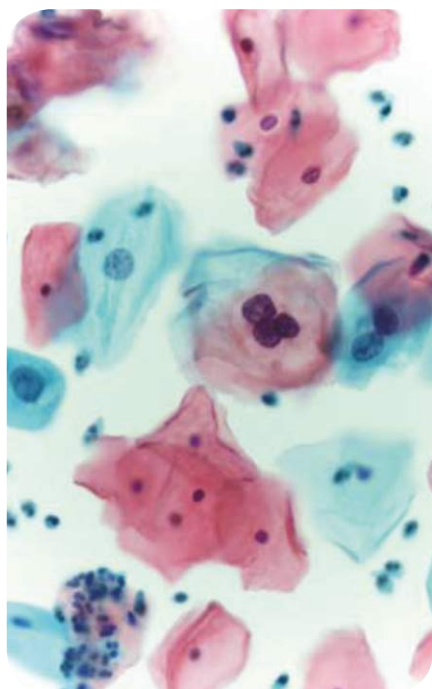
Available in different product formats: 12 x 80mm tubes, 16 x 100mm tubes and 25 x 90mm containers. 2 ml, 3 ml and 10 ml fill volumes available.

➤ **Validated for HPV and STD Screening:**

CyMol® medium maintains the stability of the specimen nucleic acid for the detection of HPV, Chlamydia and GC, with RNA and DNA based molecular amplification assays.

➤ **Anatomically Designed Copan Flocked Swabs for Collection**

Available separately from the medium, Copan offers a wide choice of Endocervical, Vaginal and Urethral collection devices. Optimal anatomical designs increase the quantity of cells collected and released, for improved test sensitivity.



Cat. No.	Description	Pack Size
610C	12 x 80mm Screw Cap Tube Containing 2ml of CyMol® Transport and Preservation Medium	50 pcs. per box 6 x 50 per case
611C	16 x 100mm Screw Cap Tube Containing 2ml of CyMol® Transport and Preservation Medium	50 pcs per box 6 x 50 per case
612C	16 x 100mm Screw Cap Tube Containing 3ml of CyMol® Transport and Preservation Medium	50 pcs per box 6 x 50 per case
613C	25 x 90mm Screw Cap Tube Containing 10ml of CyMol® Transport and Preservation Medium	15 pcs. per box 6 x 15 per case

➤ **Specifically developed for molecular biology applications**

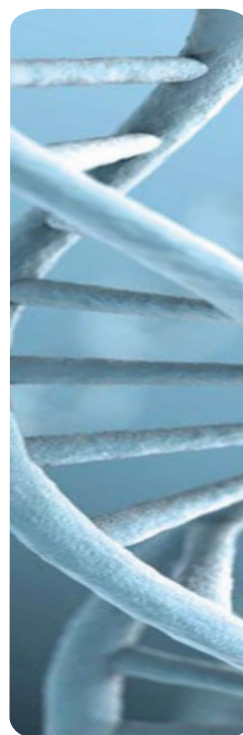
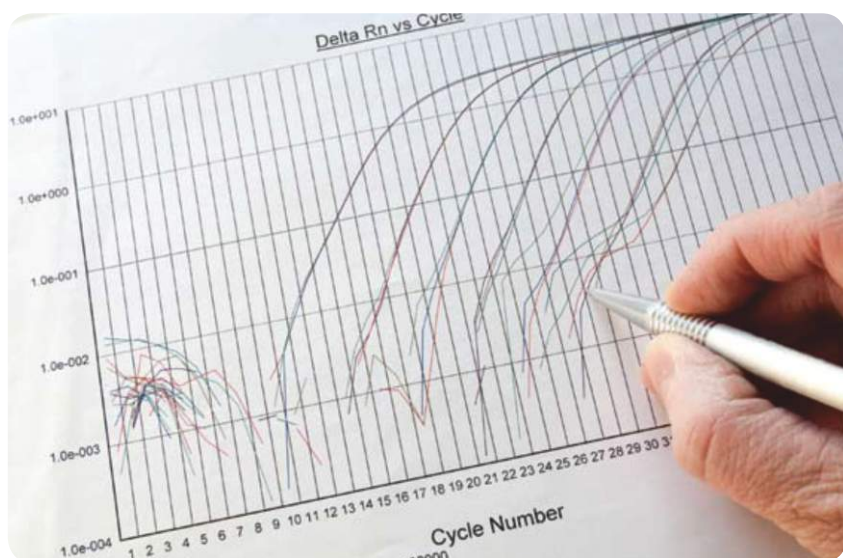
The formulation of ENat™ incorporates a detergent and guarantees optimal stabilization of the sample. Not suitable for investigations that require the recovery and cultivation of live organisms.

➤ **Validated with Numerous PCR Platforms**

Nucleic acids within the sample must be extracted and purified first before addition to the Master Mix.

➤ **Choice of Tube Size and Medium Fill Volume**

Available in three different fill volumes, 1 ml, 2 ml or 3 ml.



Cat. No.	Description	Pack Size
608CS01R	eNAT™ kit: 1ml eNAT™ transport and preservation medium in 12x80mm screw cap tube and 1 regular FLOQSwab™	50 units/box 10x50/case
608CS01M	eNAT™ kit: 1ml eNAT™ transport and preservation medium in 12x80mm screw cap tube and 1 minitip FLOQSwab™	50 units/box 10x50/case
608CS01P	eNAT™ kit: 1ml eNAT™ transport and preservation medium in 12x80mm screw cap tube and 1 thin & flexible FLOQSwab™	50 units/box 10x50/case
6E021S	eNAT™ kit: 1ml eNAT™ transport and preservation medium in 12x80mm screw cap tube, 1 regular FLOQSwab™ and 1 Pasteur pipet	50 units/box 6x50/case
608C	eNAT™ bulk: 1ml eNAT™ transport and preservation medium in 12x80mm screw cap tube	50 units/box 6x50/case
606CS01R	eNAT™ kit: 2ml eNAT™ transport and preservation medium in 12x80mm screw cap tube and 1 regular FLOQSwab™	50 units/box 10x50/case
606CS01M	eNAT™ kit: 2ml eNAT™ transport and preservation medium in 12x80mm screw cap tube and 1 minitip FLOQSwab™	50 units/box 10x50/case
606CS01P	eNAT™ kit: 2ml eNAT™ transport and preservation medium in 12x80mm screw cap tube and 1 thin & flexible FLOQSwab™	50 units/box 10x50/case
606CS01L	eNAT™ kit: 2ml eNAT™ transport and preservation medium in 12x80mm screw cap tube and 1 L-shape FLOQSwab™	50 units/box 10x50/case
606C	eNAT™ bulk: 2ml eNAT™ transport and preservation medium in 12x80mm screw cap tube	50 units/box 6x50/case
2U008N100	Closure white cap	100/bag 1500/case

Mswab™ is intended for the collection and transport of clinical specimens for a centralized **BACTERIOLOGY** and **VIROLOGY** laboratory.



Multiple Analysis, One Mswab™

Mswab™ medium provides homogeneous aliquots of the same sample suspension to run multiple tests from the same tube: from molecular assays to culture.



- ▶ **RAPID** direct nucleic acid heat extraction and testing by real-time PCR and isothermal amplification
- ▶ **TRADITIONAL** nucleic acids extraction
- ▶ **VIRUSES and BACTERIA CULTURE***
- ▶ **RAPID ANTIGEN TESTING**

**JUST ONE
Mswab™**

**Please refer to the product pack insert for the list of supported bacteria & viruses for culture.*

DNA/RNA Stabilization

- GRAM+ (i.e. MRSA)
- GRAM- (i.e. Bordetella pertussis)
- VIRUSES (i.e. HSV 1 & 2)



▶ RT



▶ +4°C



▶ -20°C



Workflow

Mswab™ offers the possibility to collect, transport and lyse the sample in the same tube without the need for further manipulation.

Tube with Glass beads is available.

[...cells or tissues can be disrupted by rapid agitation in presence of beads. Disruption and simultaneous homogenization occur by shearing and crushing action of the beads as they collide with the cells...] from Collection, transport preparation and storage of specimens for molecular methods NCCLS, MM13-P).

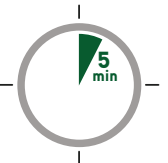


Extraction Efficiency

Mswab™ + BEADS	VS	TRADITIONAL EXTRACTION
boiling+vortex	VS	silica columns or automatic extractor
5 minutes	VS	minimum 30 minutes
No additional processing cost	VS	Kit extraction cost

Rapid (heat) Extraction: Time And Reagents Cost Saving

Mswab™ shortens specimen processing time: you may prepare a crude lysate in 5 minutes.

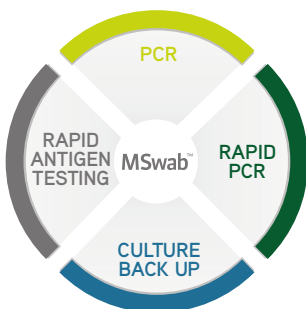


Technical support division may provide most suitable protocol, according to the platform present in your laboratory and the type of sample you need to process.

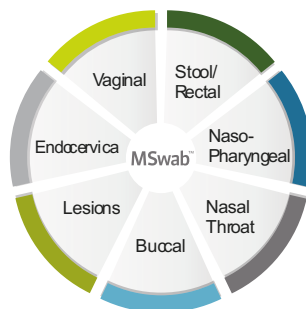


Versatility

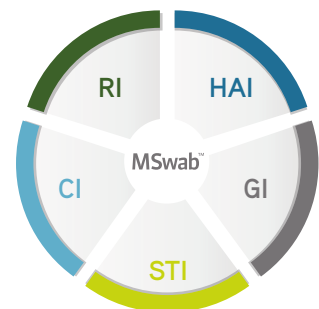
Sample Processing



Sample* Collection



Applications*



* OTHERS MAY BE APPLICABLE

RI : Respiratory infections, CI : Cutaneous infections, GI : Gastric infections, STI : Sexually transmitted infections, HAI : Hospital acquired infections



WASP® Provides a Total Solution for Preanalytical Microbiology Specimen Processing

WASP® is the only instrument that addresses all aspects of automated Microbiology specimen processing: planting and streaking, gram slide preparation, and enrichment broth inoculation to name a few. While competitive products only manage the aspect of planting and streaking, Copan understands that this is only one part of specimen setup. Copan continues to make innovative strides in Microbiology and has designed the WASP® as an open platform, modular instrument for the seamless addition of new features and capabilities

- Plant and Streak all microbiology samples
- High throughput, flexibility and traceability
- Universal decapper
- Manages any container
- Free up staff from tedious laboratory tasks
- Open architecture for additional features: Gram stain preparation, inoculation of broths and much more!



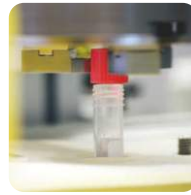
**Redefining the Future of Preanalytics
and Automated Specimen Processing in Microbiology**



Modular Instrument
Increases Investment
Longevity



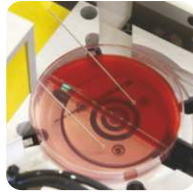
Automatically Opens and
Closes Any Size
Specimen
Container



Continuous Feeding of
Any Sample Type
Maximizes Productivity



High Throughput Specimen
Management, Planting and
Streaking



Smart Scan Technology
Reads the Barcode Label
Regardless of Position and
Selects Relevant Barcode in
the Case of Multiple Labels
Barcode Reconciliation



Image Analysis Verification
System: Ensures Accuracy
and Integrity of Loop and
Presence of Inoculum



Nine Silo Carousel holds any
Manufacturer's Plated Media
Holds Up to 378 Plates



Hepa Filter and Individualized
Specimen Management,
Containment and
Confinement Measures
Ensure Clean Work
Environment



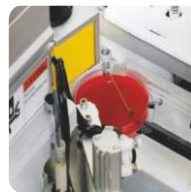
Standard Vortex Step
prevents sample
sedimentation



Multiple LIS Integration
Options WASP® can
interface with an institution's
LIS using a standard
unidirectional or bidirectional
communication



Low Cost Per Test: Reusable
Metal Loops, used for
Sampling, Planting and
Streaking are sterilized after
each sample. This system
ensures a low cost of
consumables, keeping the
cost per test low



No Outsourcing: All
software are developed in
house and the hardware
integrated by assembling
best in class standard
technology. This flexibility
allows for a nimble system
uniquely suited to the needs
of each Wasp customer.



Automatic Gram SlidePrep™.
Gram SlidePrep™ prepares a
Gram slide, including
permanent inkjet labeling of
the slide and dries it out.



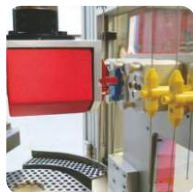
Inoculate Enrichment Broths
Fully Automated Enrichment
Broth Inoculation Includes
Labeling of the Tube. No
Manual Pre-labeling Needed



Antibiotic Discs Dispenser
Allows to automatically
place, with 4 different
dispensers, antibiotic paper
discs onto plates.



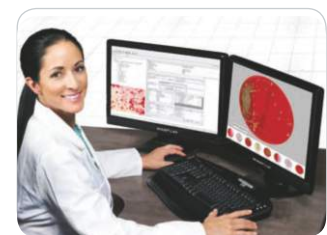
Automatic Loop Change™
Automatic Loop and Tool
Change Station™ means
longer walk away time and
less user intervention.



Optional Side Labeling. Side
Labeling of plated media
allows for an unobstructed
view of hemolysis and media
color changes.



Versatile Protocol Options
Drive Culture Quality,
Sensitivity & Cost Efficiency:
Classic Streaking, Multiple
Patients Per Plate, Variable
Loop Loading



WASPLab® is Copan's fully automated integrated solution that leverages on the flexibility of WASP as the front end automation and that is designed for handling inoculated plates management, plates incubation and reading. WASPLab will also allow to automate sample preparation steps for ID and AST tests including MALDI-TOF target spotting. WASPLab comes with WASPLab CENTRAL, which is Copan IT solution to manage WASPLab different modules and stations in a seamless way. It is the single point of access to interact with all different WASPLab® modules as well as with other third party instruments.

Biogenuix Medsystems Pvt. Ltd.

412-B, Jyoti Shikhar Building, District Center, Janakpuri,
New Delhi-110058, INDIA

Phone : +91-11-4875-4875 • Fax : +91-11-2561-2008

E-mail : contact@biogenuix.com • Web : www.biogenuix.com