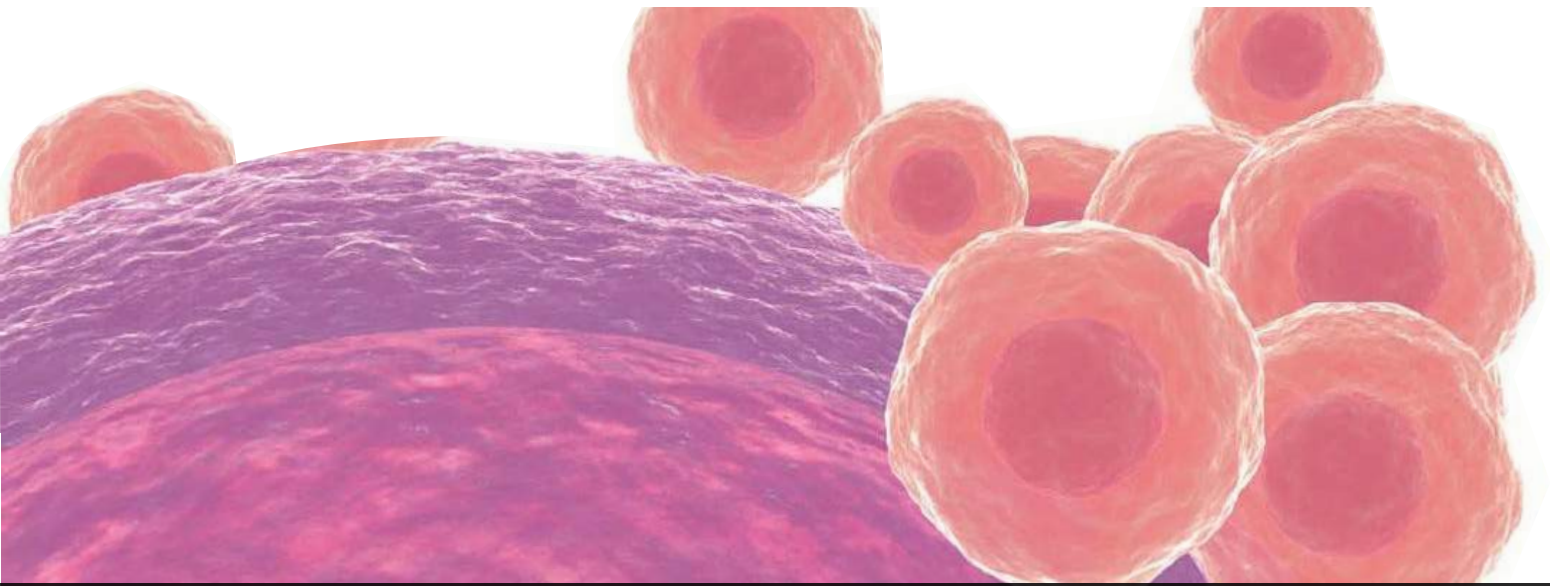


**CELL BIOLABS, INC.**  
*Creating Solutions for Life Science Research*



# Pathogen and Toxin Assays

- ☑ **Viral Antigen ELISA Kits**
- ☑ **Toxin Assays**

Biogen<sup>®</sup>

## Virus Antigen Detection

Viral antigens provide a convenient way to detect and quantify certain infectious viruses.

We offer a variety of ELISA kits to measure the specific antigen levels in plasma, serum, or purified virus preps.

- Hepatitis B Core Antigen
- Hepatitis B “e” Antigen
- Hepatitis B Surface Antigen
- Hepatitis C Core Antigen
- MuLV Core Antigen

*Note: Assays are for research use only, not for clinical diagnostic use.*

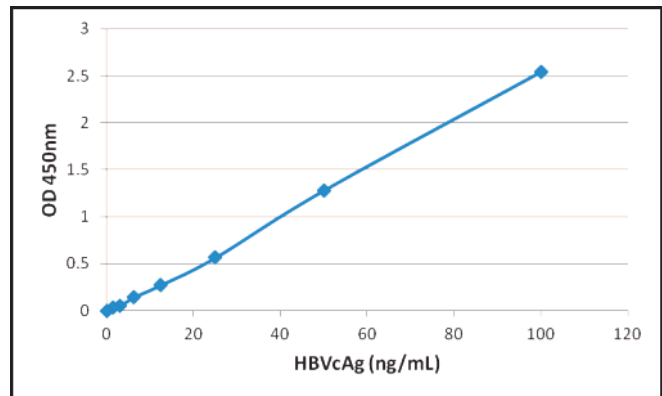
### QuickTiter™ HBV Core Antigen (HBVcAg) ELISA Kit

The core antigen of Hepatitis B virus (HBV), also known as HBVcAg, provides a convenient way to quantify HBV in samples. The QuickTiter™ HBV Core Antigen ELISA Kit specifically quantifies this core antigen.

A mouse monoclonal antibody is coated onto an 8 x 12 strip-well plate which allows the flexibility to save some of the wells for later use. After adding unknown samples, a FITC-conjugated mouse anti-HBVcAg antibody is added and binds to the antigen captured on the plate. Then a mouse anti-FITC antibody conjugated to HRP is added, followed by incubation with a substrate solution that reacts with HRP and produces a color measurable in a standard colorimetric plate reader.

The quantity of HBV is compared to the provided HBV Core Antigen Standard. Each kit provides sufficient reagents to run 96 assays including standards and unknown samples.

- **Sensitive:** Detect as little as 1 ng/mL
- **Fully Quantitative:** Recombinant core antigen is included as standard



**QuickTiter HBV Core Antigen ELISA Kit Standard Curve.**

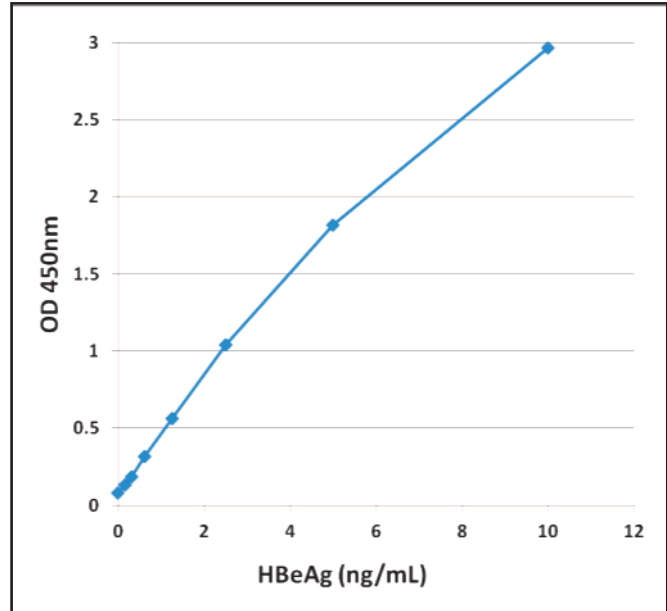
Product Name	Detection	Size	Catalog Number
QuickTiter™ HBV Core Antigen ELISA Kit	Colorimetric	96 Assays	VPK-150
		5 x 96 Assays	VPK-150-5

### QuickTiter™ Hepatitis B “e” Antigen (HBeAg) ELISA Kit

The “e” antigen of the Hepatitis B virus (HBV), also known as HBeAg, is an important marker for acute HBV infection. The QuickTiter™ Hepatitis B “e” Antigen ELISA Kit specifically quantifies HBeAg in a 96-well plate format. A mouse monoclonal antibody is coated onto an 8 x 12 strip-well plate which allows the flexibility to save some of the wells for later use.

The quantity of HBV is compared to the provided HBV “e” Antigen Standard. Each kit provides sufficient reagents to run 96 assays including standards and unknown samples.

- **Sensitive:** Detect as little as 150 pg/mL
- **Fully Quantitative:** Recombinant “e” antigen is included as standard



QuickTiter™ Hepatitis B “e” Antigen ELISA Kit Standard Curve.

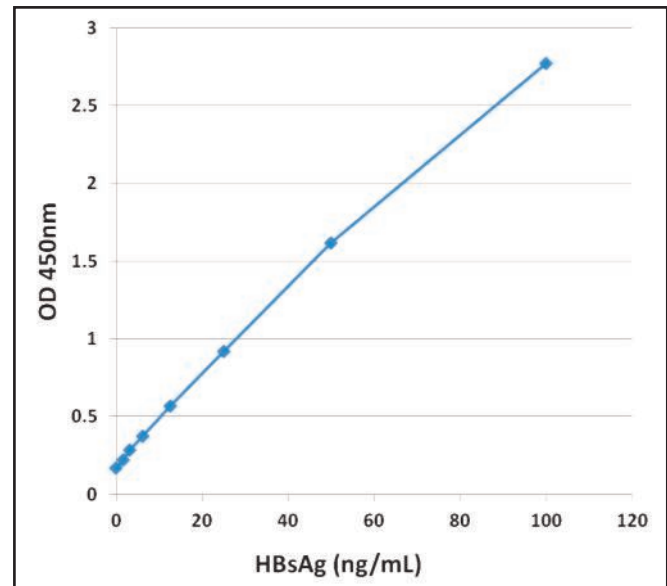
Product Name	Detection	Size	Catalog Number
QuickTiter™ Hepatitis B “e” Antigen (HBeAg) ELISA Kit	Colorimetric	96 Assays	VPK-5003
		5 x 96 Assays	VPK-5003-5

### QuickTiter™ Hepatitis B Surface Antigen (HBsAg) ELISA Kit

The surface antigen of the Hepatitis B virus (HBV), also known as HBsAg, is an important marker for acute HBV infection. The QuickTiter™ Hepatitis B Surface Antigen ELISA Kit specifically quantifies HBsAg in a 96-well plate format. A mouse monoclonal antibody is coated onto an 8 x 12 strip-well plate which allows the flexibility to save some of the wells for later use.

The quantity of HBV is compared to the provided HBV Surface Antigen Standard. Each kit provides sufficient reagents to run 96 assays including standards and unknown samples.

- **Sensitive:** Detect as little as 1 ng/mL
- **Fully Quantitative:** Recombinant surface antigen is included as standard



QuickTiter™ Hepatitis B Surface Antigen ELISA Kit Standard Curve.

Product Name	Detection	Size	Catalog Number
QuickTiter™ Hepatitis B Surface Antigen (HBsAg) ELISA Kit	Colorimetric	96 Assays	VPK-5004
		5 x 96 Assays	VPK-5004-5

### QuickTiter™ HCV Core Antigen ELISA Kit

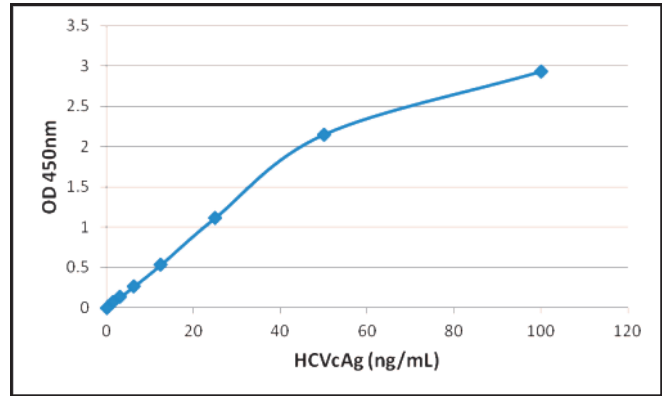
The QuickTiter™ HBV Core Antigen ELISA Kit specifically quantifies the core protein of Hepatitis B virus. A mouse monoclonal antibody is coated onto an 8 x 12 strip-well plate which allows the flexibility to save some of the wells for later use.

The quantity of HBV is compared to the provided HBV Core Antigen Standard.

**Recent Product Citations**

- Liu, D. et al. (2015). Downregulation of miRNA-30c and miR-203a is associated with hepatitis C virus core protein-induced epithelial-mesenchymal transition in normal hepatocytes and hepatocellular carcinoma cells. *Biochem. Biophys. Res. Commun.* **464**:1215-1221.
- Jittavisutthikul, S. et al. (2015). Humanized-VHH transbodies that inhibit HCV protease and replication. *Viruses* **7**:2030-2056.
- Kong, L. et al. (2014). HIV infection of hepatocytes results in a modest increase in hepatitis C virus expression in vitro. *PLoS One* **9**:e83728.
- Carpentier, A. et al. (2014). Engrafted human stem cell-derived hepatocytes establish an infectious HCV murine model. *J. Clin. Invest.* **124**:4953-4964.

- **Sensitive:** Detect as little as 1 ng/mL
- **Fully Quantitative:** Recombinant core antigen included as standard



QuickTiter HCV Core Antigen ELISA Kit Standard Curve.

Product Name	Detection	Size	Catalog Number
QuickTiter™ HCV Core Antigen ELISA Kit	Colorimetric	96 Assays	VPK-151

### QuickTiter™ MuLV Core Antigen ELISA Kit

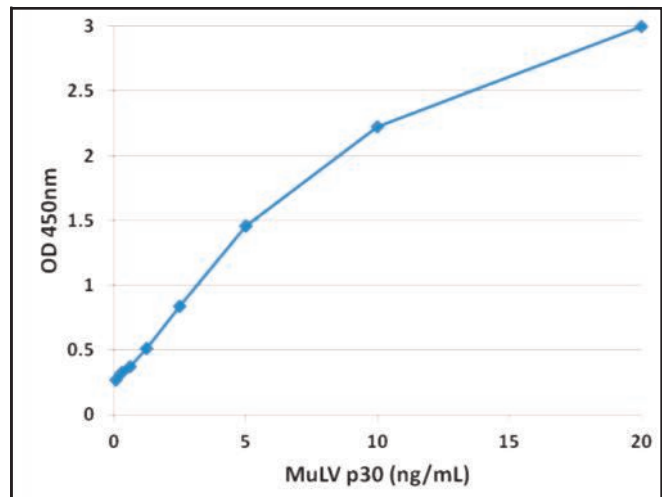
Murine leukemia virus (MuLV) is a retrovirus capable of causing cancer in mice and related vertebrates. Recently discovered in humans, xenotropic murine leukemia virus-related virus (XMRV) is closely related to MuLV; the p30 core antigens share 96% identity.

Our QuickTiter™ MuLV Core Antigen ELISA Kit specifically measures the level of the p30 core antigen in blood or other samples.

**Recent Product Citations**

- Rosales Gerpe, M.C. et al. (2015). N-linked glycosylation protects gammaretroviruses against deamination by APOBEC3 proteins. *J. Virol.* **89**:2342-2357.
- Aydin, H. et al. (2014). Crystal structures of beta- and gamma-retrovirus fusion proteins reveal a role for electrostatic stapling in viral entry. *J. Virol.* **88**:143-153.
- Nityanandam, R. and Serra-Moreno, R. (2014). BCA2/Rabring7 targets HIV-1 Gag for lysosomal degradation in a tetherin-independent manner. *PLoS Pathog.* **10**:e1004151.
- Kirchmeier, M. et al. (2014). Enveloped virus-like particle expression of human cytomegalovirus glycoprotein B antigen induces antibodies with potent and broad neutralizing activity. *Clin. Vaccine Immunol.* **21**:174-180.
- Belanger, K. et al. (2013). Binding of RNA by APOBEC3G controls deamination-independent restriction of retroviruses. *J. Exp. Biol.* **216**:2213-2220.

- **Sensitive:** Detect as little as 300 pg/mL
- **Fully quantitative:** Recombinant core antigen included as standard



Standard Curve Generated with the QuickTiter™ MuLV Core Antigen ELISA Kit.

Product Name	Detection	Size	Catalog Number
QuickTiter™ MuLV Core Antigen ELISA Kit (MuLV p30)	Colorimetric	96 Assays	VPK-156

## OxiSelect™ BPDE Adduct ELISA Kits

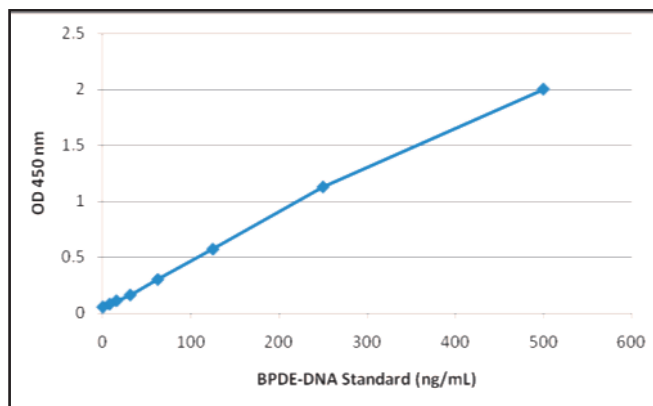
Polycyclic aromatic hydrocarbons (PAH) are potent carcinogenic pollutants commonly associated with oil, cigarette smoke, and automotive exhaust. Benzo(a)pyrene, the first chemical carcinogen discovered, is converted to benzo(a)pyrene 7,8 diol-9,10 epoxide (BPDE) through a series of enzymatic reactions. BPDE can attack both proteins and DNA, forming adducts that can potentially result in tumor formation.

Our OxiSelect™ BPDE Adduct ELISA Kits provide a convenient method to measure BPDE adducts with either DNA or proteins from cells or tissues. Quantitation is performed by comparing unknown values against a standard curve generated with the standard provided in each kit.

- Our BPDE DNA Adduct ELISA can detect adducts as low as 30 ng/mL.
- Our BPDE Protein Adduct ELISA can detect adducts as low as 60 ng/mL.

### Recent Product Citation

Chiu, C.Y. et al. (2014). Low-dose benzo(a)pyrene and its epoxide metabolite inhibit myogenic differentiation in human skeletal muscle-derived progenitor cells. *Toxicol. Sci.* 10.1093/toxsci/kfu003. (STA-357)



Standard Curve Generated Using the OxiSelect™ BPDE DNA Adduct ELISA Kit.

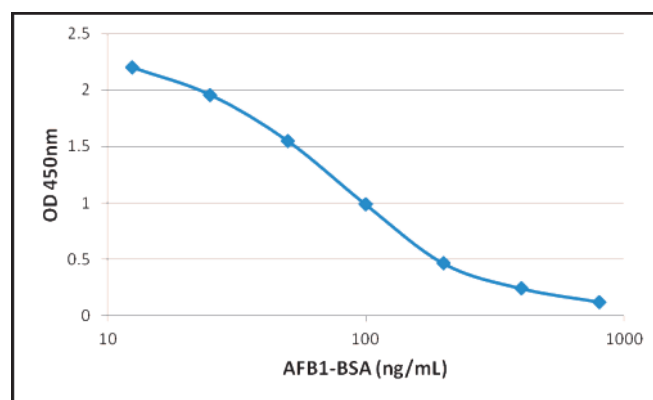
Product Name	Detection	Size	Catalog Number
OxiSelect™ BPDE DNA Adduct ELISA Kit	Colorimetric	96 Assays	STA-357
OxiSelect™ BPDE Protein Adduct ELISA Kit	Colorimetric	96 Assays	STA-301

## Aflatoxin ELISA Kits

Aflatoxins are among the most potent genotoxic agents known. They can induce chromosomal aberrations, micronuclei, sister chromatid exchange, unscheduled DNA synthesis, and chromosomal strand breaks. Aflatoxins can form adducts with both DNA and proteins.

Our Aflatoxin Competitive ELISA Kits provide a convenient method for detection of aflatoxin adducts.

- Our Aflatoxin Competitive ELISA Kit measures the total of Aflatoxin B1 and Aflatoxin B2 adducts in protein samples.
- Our Aflatoxin DNA Adduct Competitive ELISA Kit detects total Aflatoxin B1-DNA adducts, both ring-opened and ring-closed forms.



Standard Curve Generated with the Aflatoxin Competitive ELISA Kit.

Product Name	Detection	Size	Catalog Number
Aflatoxin Competitive ELISA Kit	Colorimetric	96 Assays	AKR-350
Aflatoxin DNA Adduct Competitive ELISA Kit	Colorimetric	96 Assays	AKR-351



**Biogenuix Medsystems Pvt. Ltd.**

412-B, Jyoti Shikhar Building, District Center,  
Janakpuri, New Delhi-110058, INDIA

Phone : +91-11-4875-4875

E-mail : [contact@biogenuix.com](mailto:contact@biogenuix.com)

Web : [www.biogenuix.com](http://www.biogenuix.com)