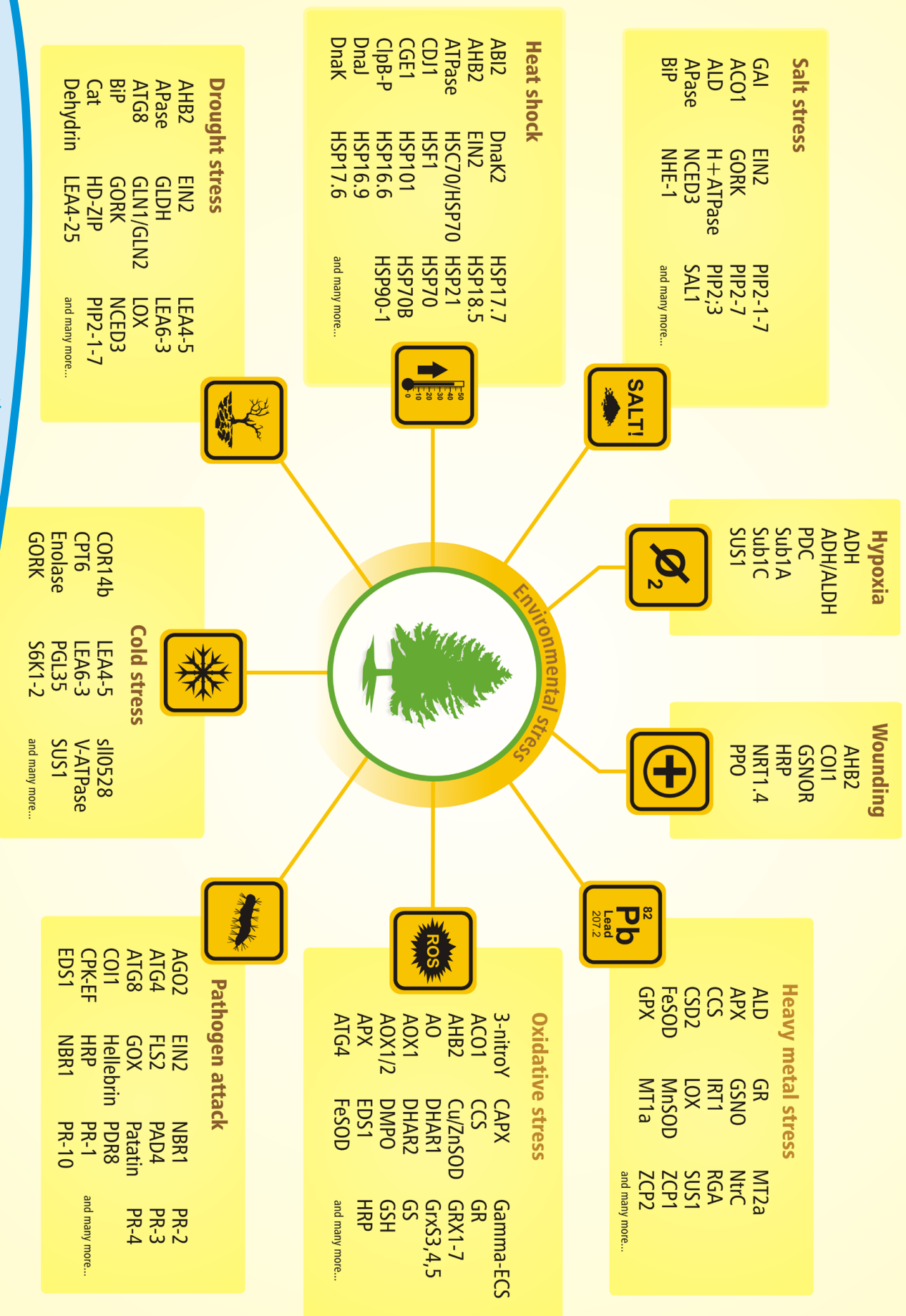


Agrisera environmental stress-related antibodies



Designed by Sheviala®

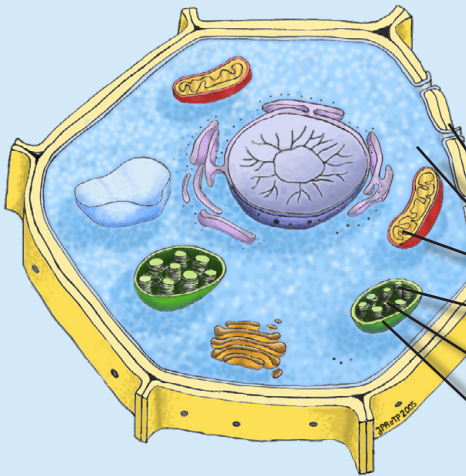
Agrisera



Antibodies



www.agrisera.com | orders@agrisera.com | Ph: +46 935 33000, Fax: +46 935 33044



Antibodies toward compartment/fraction marker proteins

Fraction*	Antibody marker**	Positive control & calibrated standard	Species range
Plasma membrane	H+ATPase (AS07 260)		Plants; Algae
Cytosol	PEPC (PEP carboxylase) (AS09 458)	PEPC standard (AS09 458S)	Plants; Algae; Cyanobacteria
Mitochondrion	Aox I/II (alternative oxidase) (AS04 054)	AOX 1/2 standard (AS04 054S)	Plants; Algae; Bacteria
Chloroplast – thylakoid	PsbD (AS06 146)	PsbD standard (AS09 146S)	Plants; Algae; Cyanobacteria
Chloroplast – stroma	RbcL, rubisco large subunit (AS03 037)	RbcL standard (AS01 017S)	Plants; Algae; Cyanobacteria
Chloroplast – outer membrane	Toc75 (AS06 150)		Monocots; Dicots

*Antibody markers are also available for: ER, golgi, nucleus, peroxisome, vacuole.
 **Subset of available antibody markers. Find a complete list at agrisera.com

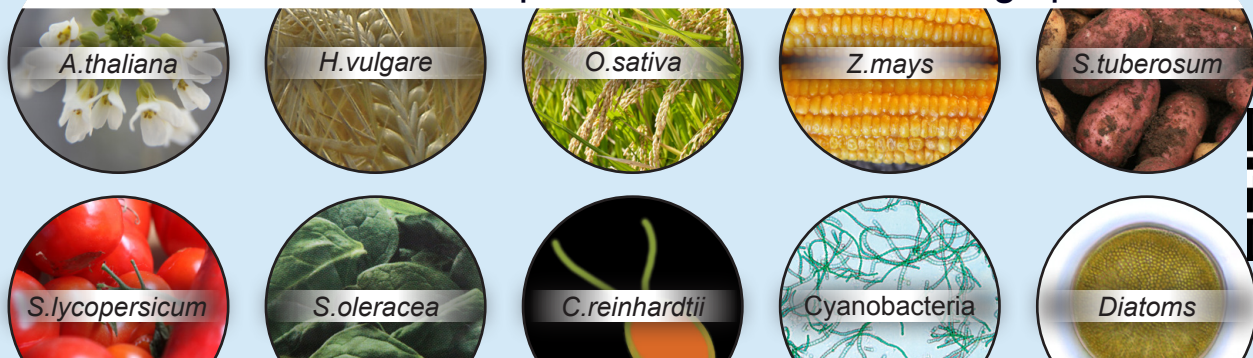
More products can be found in the
#1 Plant & Algal Antibody Catalogue in the world

Download the catalogue to your phone!



scan the code:

Antibodies available to proteins from the following species:



And more on our website: www.agrisera.com/species

Loading control antibodies for plant samples

Actin (AS13 2640)

Actin-11 (AS10 702)

AtpB (AS03 030 or AS05 085)

H3 (AS10 710)

PsbO (AS06 142-33)

PsbP (AS06 142-33)

Find more on our website: www.agrisera.com

Agrisera plant antibody western blot resource page

Video tutorials

Protocols

Technical tips

www.agrisera.com/en/info/western-blot.html

scan with your phone:

