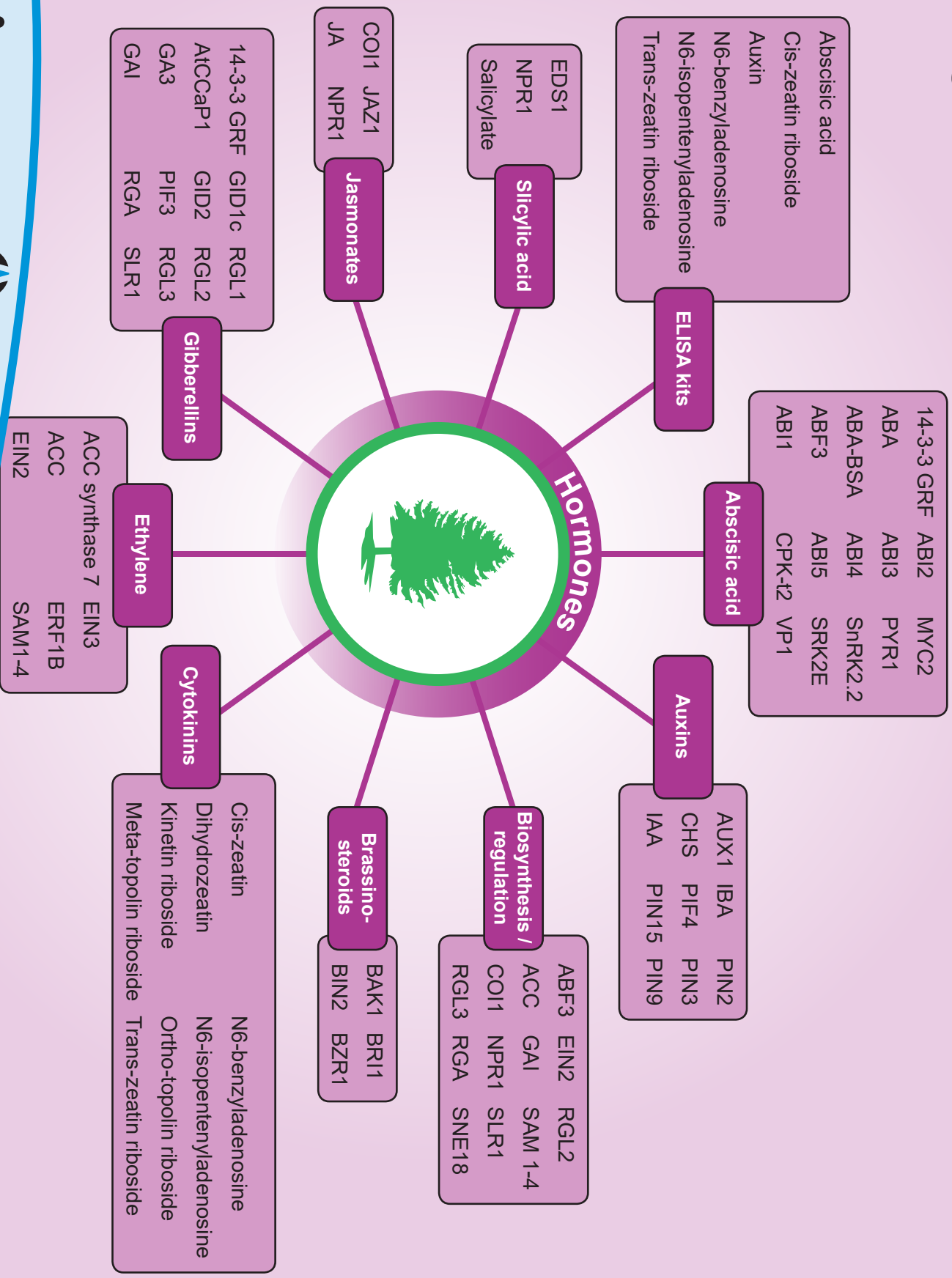


Agrisera hormone related antibodies and kits



Agrisera

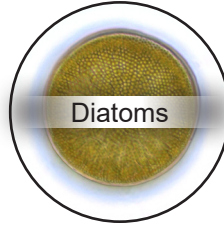
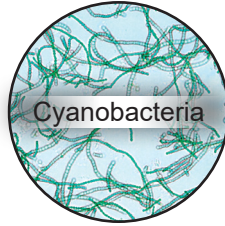
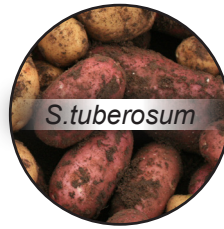
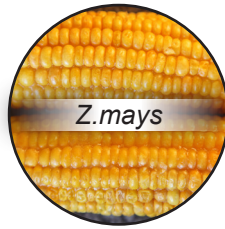


Antibodies



www.agrisera.com | orders@agrisera.com | Ph: +46 935 33000, Fax: +46 935 33044

Antibodies available to proteins from the following species:



And more on our website: www.agrisera.com/species

Anti-TAG antibodies; directly conjugated providing shorter incubations:

We have antibodies against the following protein TAGs:

- GFP/YFP/RFP/CFP
- GST
- HA
- His
- MBP
- Myc
- S
- T7
- V5
- DYKDDDDK (binds to SigmaFLAG®)

With the following conjugations available:

- ALP
- Biotin
- Dylight® 488
- DyLight® 550
- DyLight® 650
- Europium 1024
- HRP
- SureLight®R-phycoerythrin

Loading control antibodies for plant samples

Actin (AS13 2640)

Actin-11 (AS10 702)

AtpB (AS03 030 or AS05 085)

H3 (AS10 710)

PsbO (AS06 142-33)

PsbP (AS06 142-33)

Find more on our website: www.agrisera.com

Agrisera plant antibody Western blot resource page

Video tutorials

-

Protocols

-

Technical tips

www.agrisera.com/en/info/western-blot.html

scan with your phone:

